



# PowerManager II

## Uninterruptible Power Supply Software User's Manual

### Support:

MS-Windows® 98  
MS-Windows® Me  
MS-Windows® NT  
MS-Windows® 2000  
MS-Windows® XP  
MS-Windows® 2003  
MS-Windows® Vista  
SCO Unix  
LINUX  
FreeBSD



All rights reserved.

## LIMITED WARRANTY

The program and enclosed materials are all provided “as is” without warranty of any kind, either expressed or implied, including but not limited to the implied warranties of merchantability and fitness for a particular purpose. The entire risk as to quality and performance of the program and enclosed material is assumed by you.

### LIMITATION OF REMEDIES

RichComm System Technologies Co., Ltd.’s entire liability and your exclusion remedy

shall be replacement of the media if you have met the conditions as described under

“Limited warranty.” In no event will RichComm system technologies Co., Ltd. be liable to you for any other damages arising out of your use of this program. All mentioned trademarks are the registered trademarks of their respective owners.

### TECHNICAL SUPPORT

IpPowerSE network monitoring and control software is developed by Guangzhou RichComm System Technologies Co., Ltd. If you have any questions or suggestions on them, please contact us at any time.

Guangzhou RichComm System Technologies Co., Ltd

Tel: 020-82329896, 82329869, 82321515, 82321516

Fax: 020-82329896 8005

E-mail: service@richcomm.com.cn

Website: <http://www.richcomm.com>



- Introduction**.....4
- Packing including .....5
- Powermanager II operation manual .....5
- System requirements.....5
- PowerManager II for Windows**.....6
- Featuresa .....6
- Software Installation .....7
- Start-up and Quit Powermanager II .....12
- Sytem Settings .....14
- A.Base setting .....14
- B.Shutdown settings .....18
- C.Crisis process .....19
- D.Hi story data savi ng setti ng.....22
- BP Alarm.....23
- Broadcast alarm.....25
- Email.....26
- SMS.....28
- Sound.....29
- Tel ephone Voi ce.....30
- Windows.....31
- Check Hi story Event.....33
- Check Hi story Data.....34
- Check curve map.....38
- Check State Map.....39
- UPS Control.....48
- PowerManager II for LINUX .....51
- 1.Software  installation and operation.....51
- 2.software package.....52
- PowerManager II for SCO UNIX .....53
- 1.Software  installation and operation.....53
- 2.software package.....54
- PowerManager II for FreeBSD .....55
- 1.Software  installation and operation.....55
- 2.software package.....56
- 3.contact us and technical support .....56

# Introduction

PowermanagerII is smart UPS monitoring and control software. It offers local monitoring and network agent monitoring functions through the COM port and USB port. PowermanagerII displays the real time status of the UPS (e.g. input & output voltage, frequency, load, temperature and battery capacity) in numeric and graphic forms, which can help the user monitor the quality of power supply. Simultaneously, the user can remotely monitor the UPS via a network and manage the power system more effectively. In AC failure or UPS battery low cases PowermanagerII will perform its monitoring functions automatically. In addition to auto saving files and performing safe system shutdown , PowermanagerII has some new ways to send warning messages by auto dialing a modem and by sending E-mail. Users can be sure not to lose any information due to power interruptions and can take appropriate actions at once. The system can record UPS performance history data for long term monitoring. In addition, PowermanagerII has a new Windows NT service function, which allows the monitoring program to be executed automatically and does not require a user to be logged in. PowermanagerII is available in many languages, you can select the one that is the most familiar for you to carry out the software configuration and operation.

Today, with the widespread use of the internet, we have come to a time where information is critical. Both PCs and Servers are used to receive and send information round the clock, so automated power management equipment for the UPS has become a necessity PowermanagerII with its full range of functions will be the best partner for your smart UPS.



---

## **Packing including**

Powermanager II Installation CD 1pcs  
DB9F/DB9M cable 1pcs

## **Powermanager II operation manual System requirements**

Powermanager II hardware and software requirements as follows:

Computer system RS232 communication port  
Adopt real RS-232 communication intelligent

for

MS-Windows® 98  
MS-Windows® Me  
MS-Windows® NT  
MS-Windows® 2000  
MS-Windows® XP  
MS-Windows® 2003  
MS-Windows® Vista  
SCO Unix  
LINUX  
FreeBSD

# PowerManager II for Windows

## Featuresa

- uIntuitionistic and clarity display pressure、frequency、load、batteries of UPS etc diversified parameter real time fettle communication as data and figure, help users know circs of currently electric power accommodate
- uSupporting Windows NT Service function.
- uSupporting many kinds of languages.
- uTransmitting the warning message by e-mail automatically.
- uCalling the warning message automatically.
- uMonitoring UPS remotely via TCPIP or Internet.
- uDetecting the AC fail and the UPS battery low automatically.
- uSetting the turning on/off time automatically.
- uDisplaying the UPS status in drawing, such as the temperature, voltage, load, line frequency etc.
- uBroadcasting the warning message.
- uPop-up alarm message on the computer with Windows OS through Windows NT Messenger service.
- uCan select save application files before shutdown system or let computer enter sleep mode directly (need the computer support this function)
- uAuto send alarm message via GSM SMS.
- uAuto send alarm message via BP-call.
- uAuto send alarm voice to via telephone.
- uSeamless connect to controlplane, realize nobody on duty.
- uSetting the countdown time and the interval of each warning.
- uSetting UPS diagnostic and self testing time.
- uBefore removing the system, automatically close and store the applicable programs.
- uRecording and analyzing the UPS status

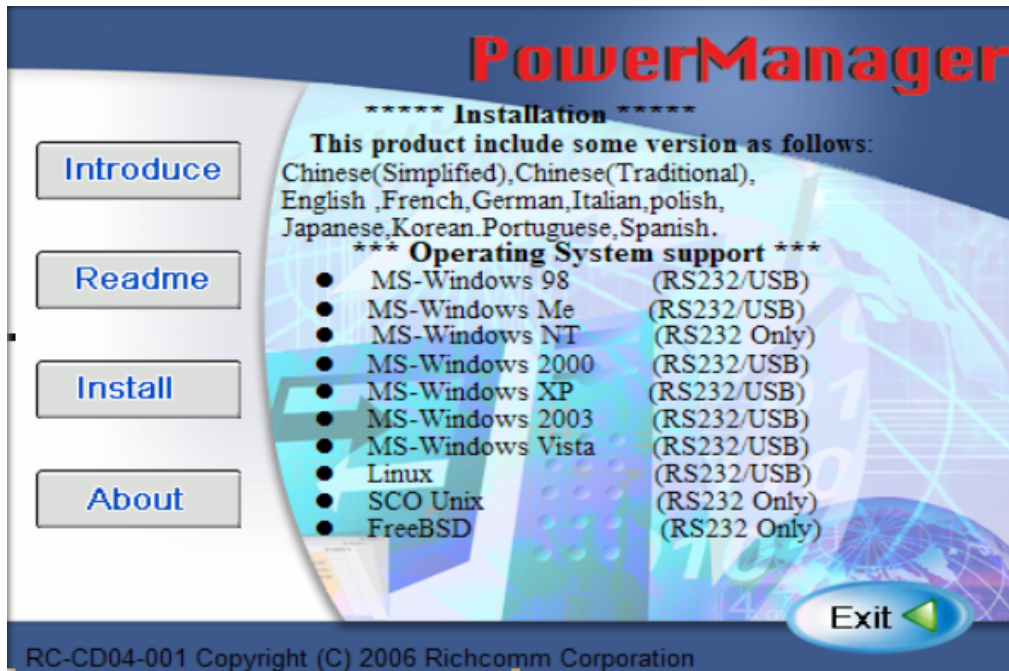
## Software Installation

Following the steps below:

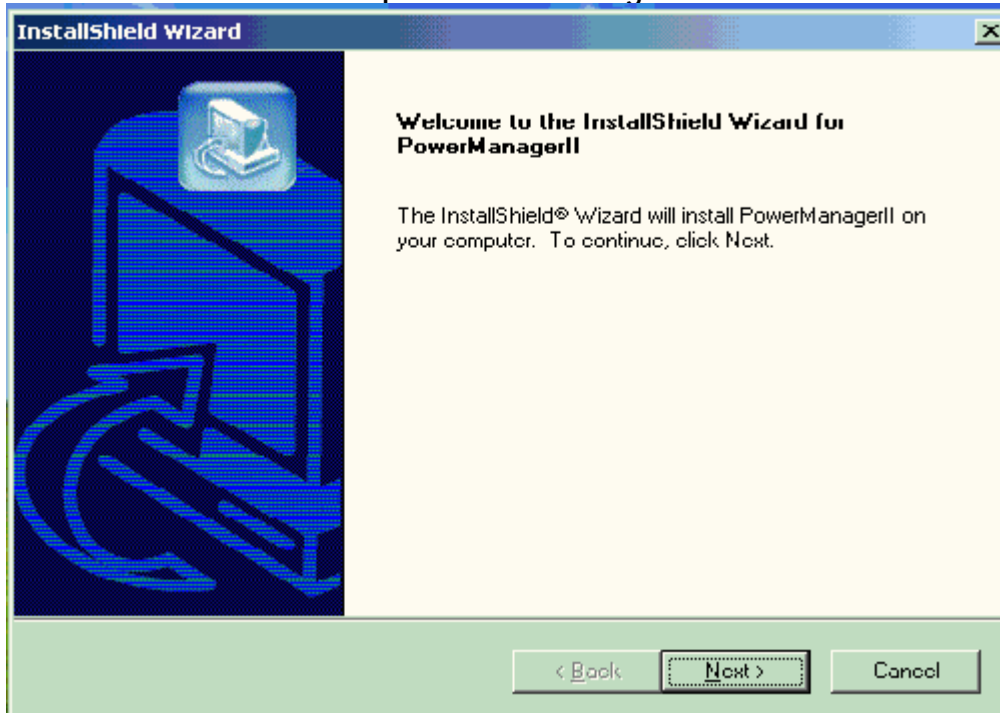
1. Turn on UPS and PC.
2. Place the Powermanager II CD to the CD ROM, will show the install interface:
  - 2.1>Button 'Introduce' is the default interface is introduce the CD include:



- 2.2>Button 'Readme' is the CD is support system and Language:

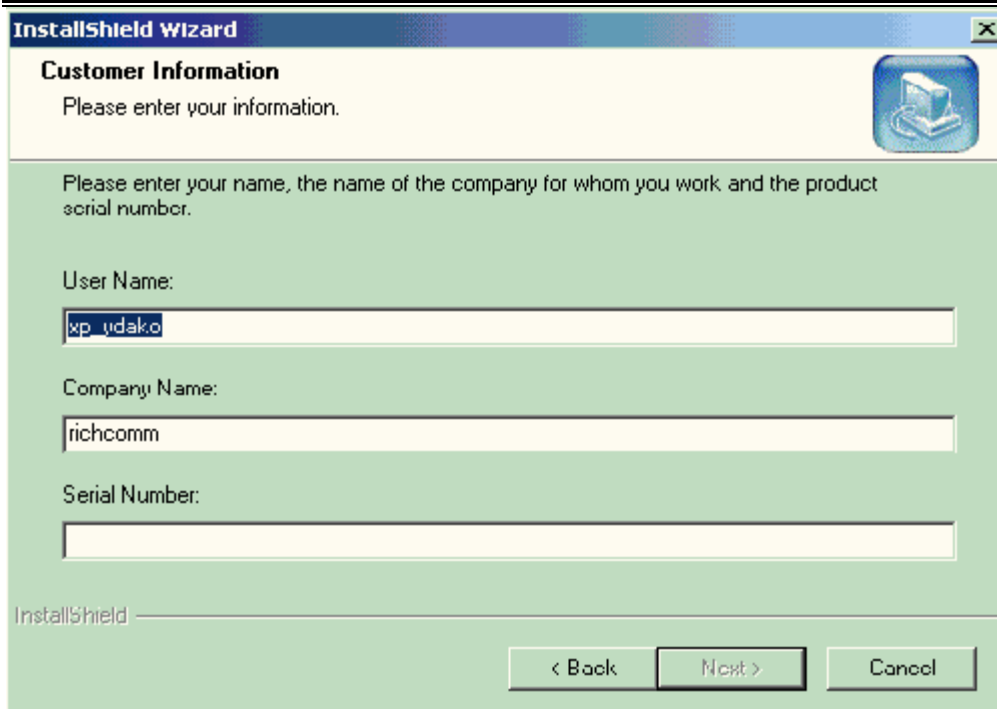


### 2.3>Button 'Install' is setup the PowerManagerII




following the install wizard





**InstallShield Wizard** [X]

**Customer Information** 

Please enter your information.

Please enter your name, the name of the company for whom you work and the product serial number.

User Name:

Company Name:

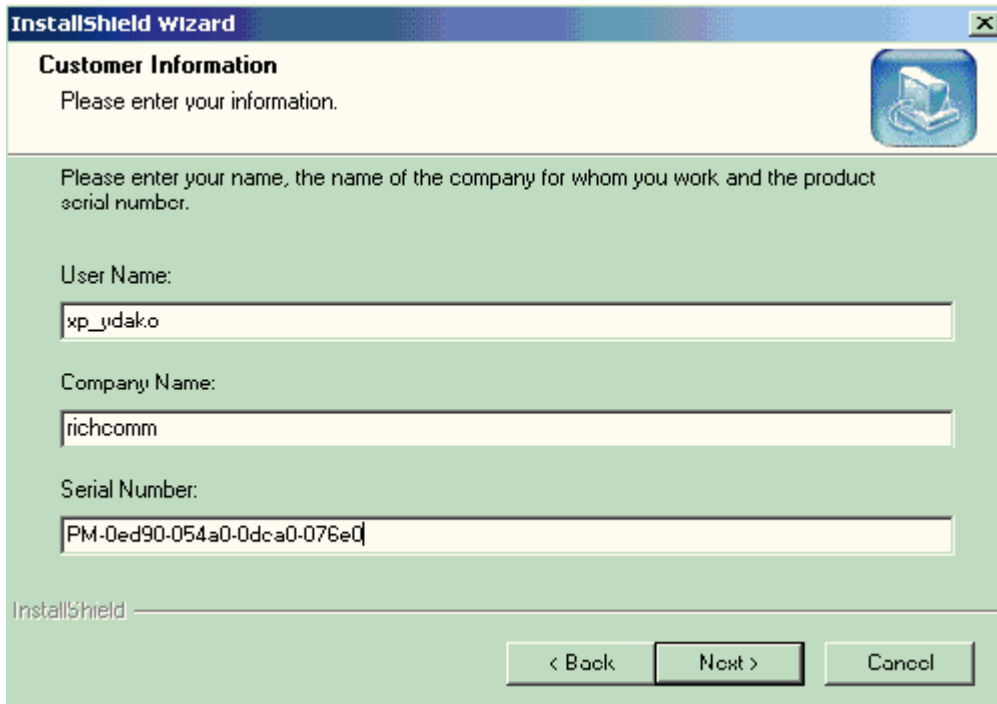
Serial Number:

InstallShield


< Back    Next >    Cancel

on the serial number input box please enter the serial number which is on the cd packet and following the install wizard continue to next, make sure the setup dir and continue to enter the language which you will to install, After installation,

Powermanager II files will be copied into the directory you appointed.



**InstallShield Wizard** [X]

**Customer Information** 

Please enter your information.

Please enter your name, the name of the company for whom you work and the product serial number.

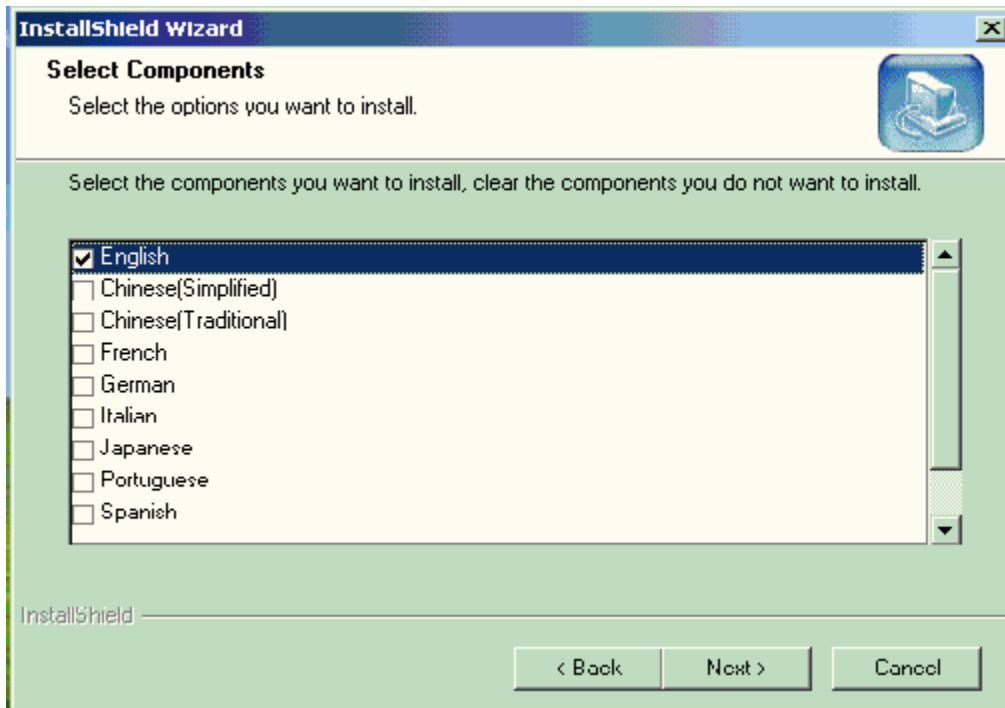
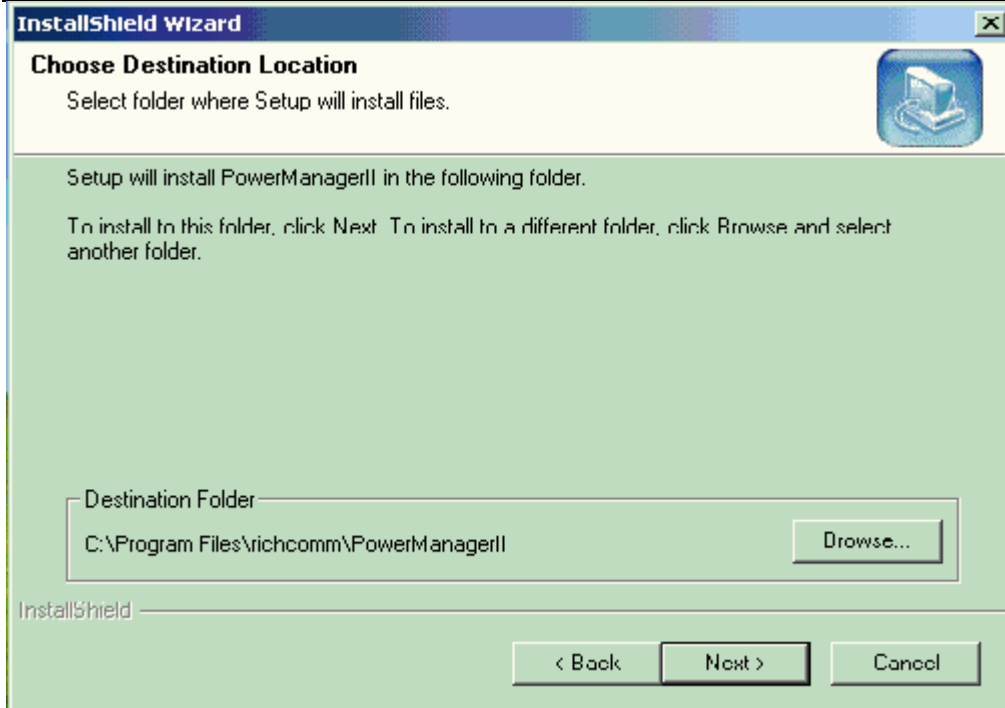
User Name:

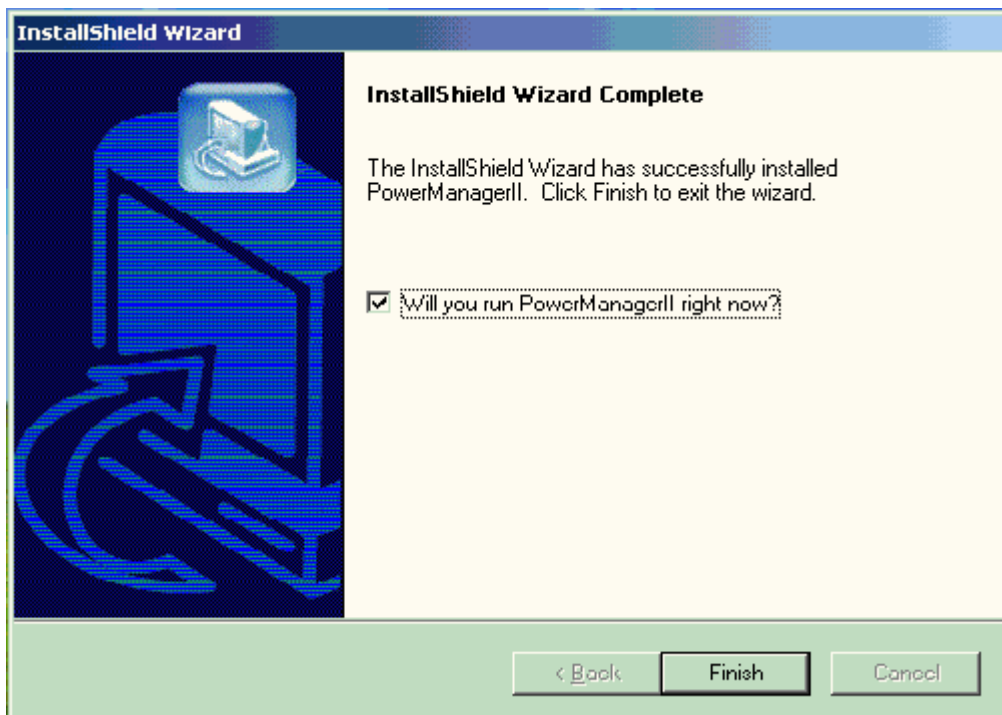
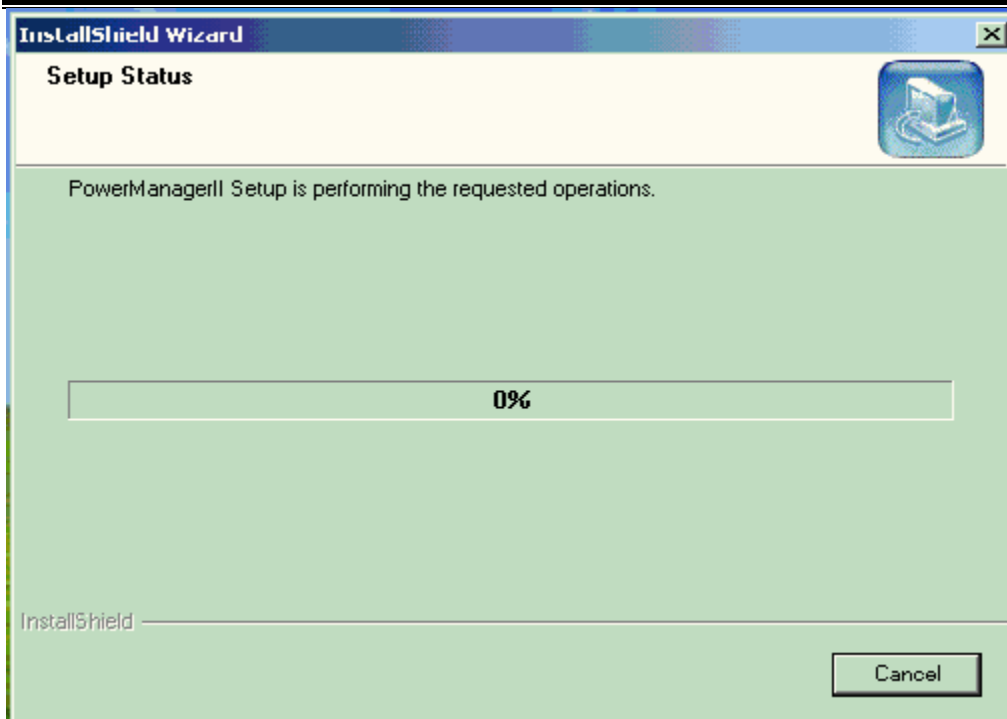
Company Name:

Serial Number:

InstallShield

< Back    Next >    Cancel





2.4>Button 'About' is PowerManagerII development 'Welcome'



## Start-up and Quit Powermanager II

### Start-up Powermanager II

After installation, please restart the computer. For Windows98, check if there is a 'PowerManagerII' icon in task bar. For Windows NT, go to 'control panel->service' and check if 'PowerManagerII' service has started.

If you want to change the function configuration, please run the Powermanager II in the task bar directly or select " Powermanager II for Windows" from " Powermanager II " in program group of start menu in Windows.



Powermanager II in gear



Powermanager II un-start up or not on line

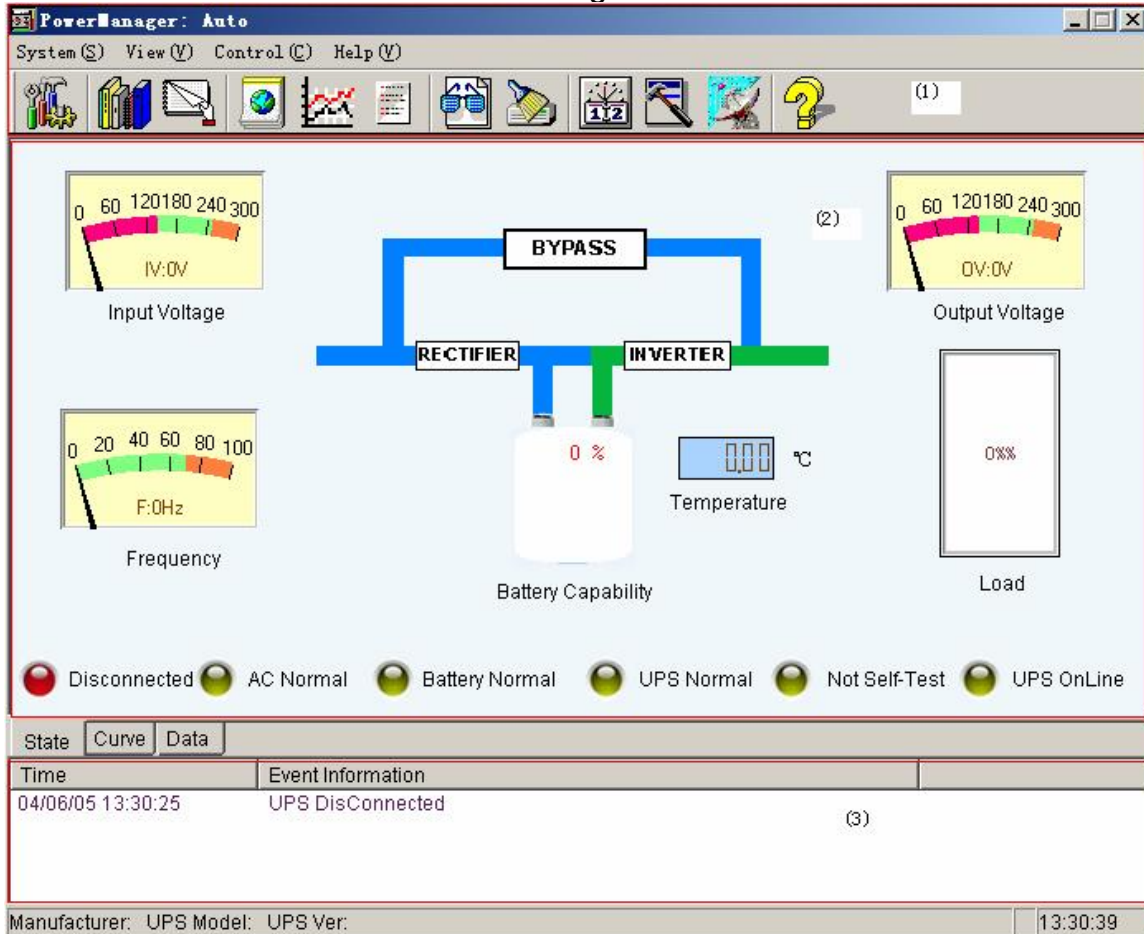
### Quit Powermanager II

After installation, there is 4 selection as below under" Powermanager II " in Windows start menu. If you want to remove the Powermanager II from the system, please select " Quit ".

Start Monitor(W)..	Ctrl+W
Help(H)..	Ctrl+H
About(A)..	Ctrl+A
Quit(Q)..	Ctrl+Q

## Description

The main interface window of PowerManager II

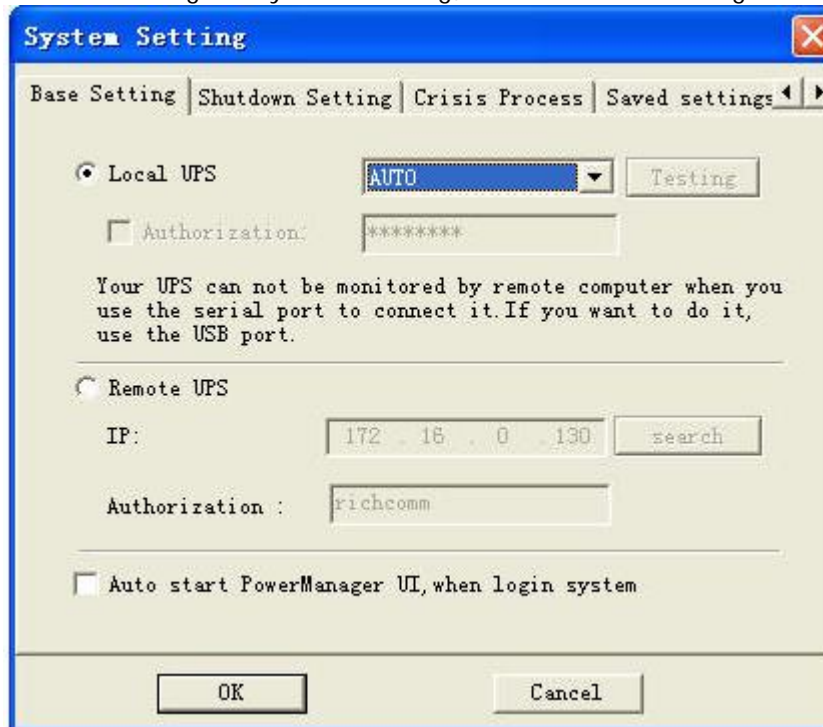


- (1) menu bar
- (2) UPS status chart
- (3) UPS warn parameter display area

## System Settings

### A. Basic Setting

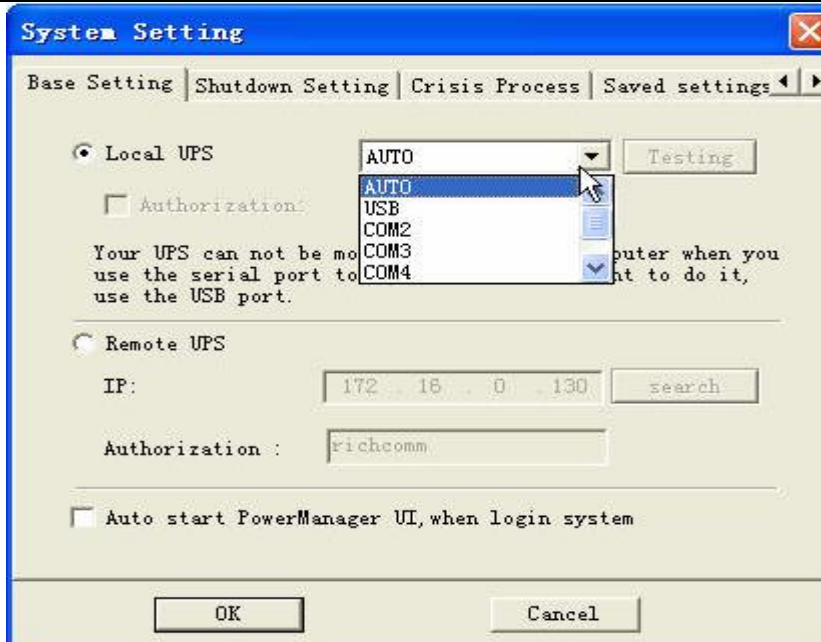
After clicking on system setting, enter the following interface :



The screenshot shows a window titled "System Setting" with a blue title bar and a close button. The window has four tabs: "Base Setting", "Shutdown Setting", "Crisis Process", and "Saved settings". The "Base Setting" tab is active. It contains two radio button options: "Local UPS" (selected) and "Remote UPS". Under "Local UPS", there is a dropdown menu set to "AUTO" and a "Testing" button. Below that is an unchecked checkbox for "Authorization:" with a password field containing "\*\*\*\*\*". A note states: "Your UPS can not be monitored by remote computer when you use the serial port to connect it. If you want to do it, use the USB port." Under "Remote UPS", there is an "IP:" field with "172 . 16 . 0 . 130" and a "search" button. Below that is an "Authorization :" field with "richcomm". At the bottom, there is an unchecked checkbox for "Auto start PowerManager UI, when login system". The window has "OK" and "Cancel" buttons at the bottom.

This is to configure the mode of monitoring UPS

1:Default activate "Local UPS", and can choose "AUTO", "COM", "USB"



a: Choose "AUTO", it will automatically search for communication mode with UPS

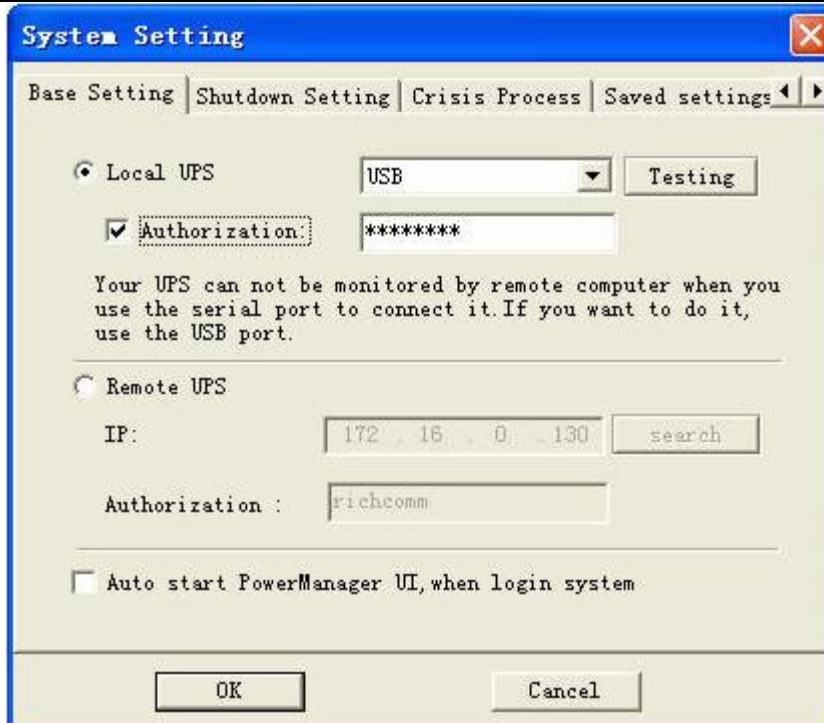
b: Choose "USB", it will only search for communication mode between USB and UPS after choosing USB port, network monitor authorization can be activated

Network monitoring function: one UPS can be monitored by multi computer and protect multi computers against crisis

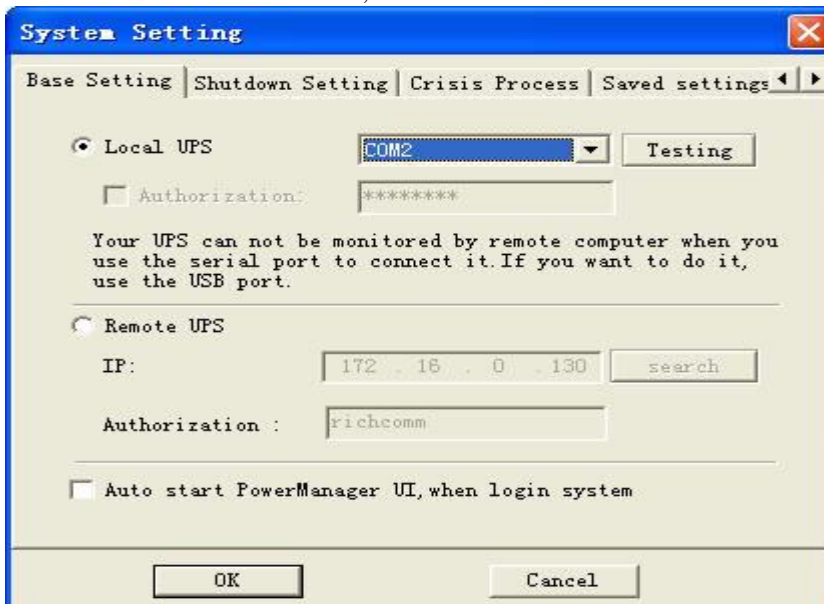
Network Monitoring condition: computers need monitoring must be installed by our software and choose

long-distance UPS in basic setting

The PowerManager II under monitoring must be USB communicated



c: Choose “COM”, it will only search for communication mode between COM and UPS need to choose correct COM, or it will not be communicated

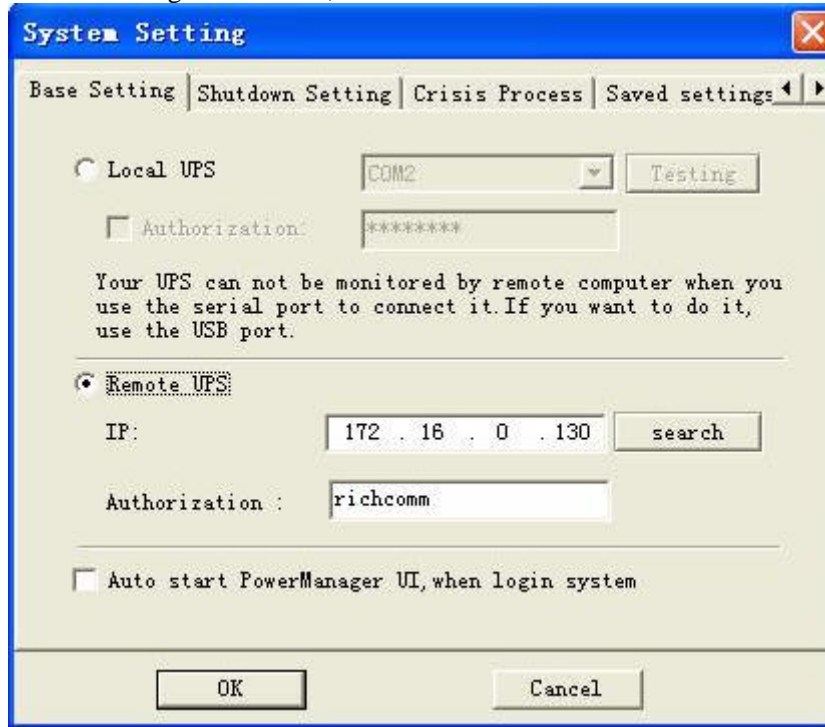


2: “testing”, after choosing interface, click on “testing” we can test the communication mode to see if communication is normal.

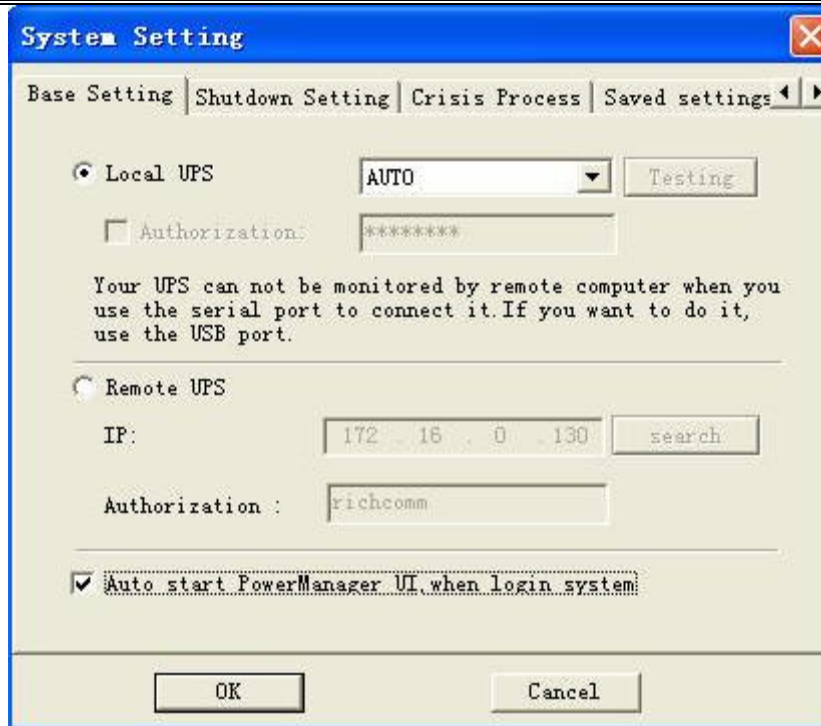
3: “long-distance UPS”, it’s non-LAN UPS being activated and input IP address for the computer that has PowerManager II installed and is under monitoring. or click “search”, all IP addresses for computers that have PowerManager II installed can be listed up so you can choose



one in need of being monitored;After “authorization”, the text must be same as the one authorized by monitored PowerManager II network, or could be failed to monitor



4: After “Start PowerManager II when log in WINDOWS” being activated, the monitoring interface can be automatically opened after computer started and remind you to start this software’s services at the same time;

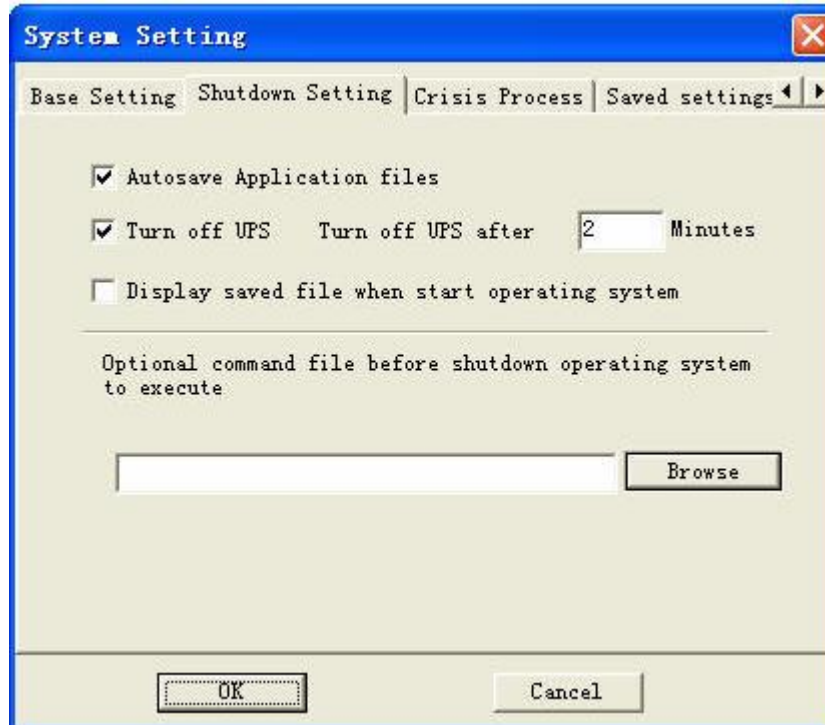


it enters the main monitoring interface after confirm:  
(this interface will not appear if PowerManager II service is started automatically and as defaulted)



## B.Shutdown settings

Choose shutdown setting and enter interface as below:



1, self-saving function ( activate it as advice)

1) when set this function valid, software will save some files under operating when system is shut down

2) when set this function invalid, software will not save files under operating when system is shut down

**2 shut down UPS at the same time and shut down UPS in X minutes**

( please set shutdown time according to UPS's power supply time and computer shutdown time)

1) when set it valid, UPS will shut down in X minutes when system is closed

2) when set it invalid, UPS will not shut down when system is closed

3 showing file-saving when starting

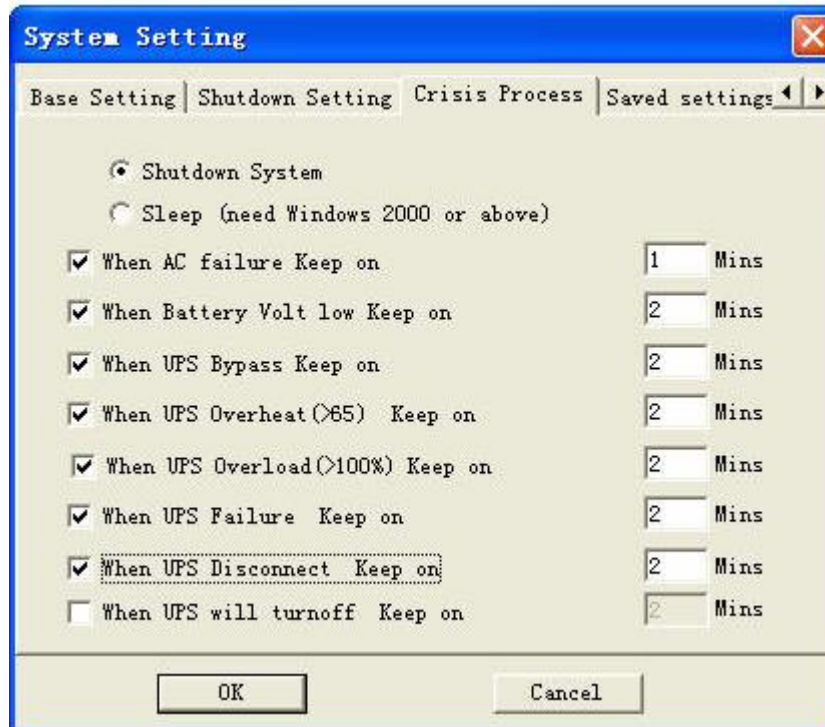
1) when set it valid, there will be a window popped up and tell where the saved files are and the last program closed upon starting the software

2) When set it invalid, there will not be a window popped up telling where the saved files are upon starting the software.

4 External program execution before shut down: after choosing, software will carry out program set by user before the system is shut down

## C.Crisis process

1) Choose to close computer

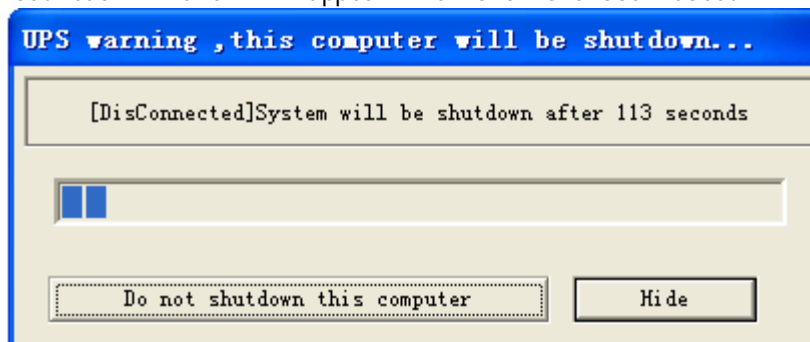


Please activate the parameters if need to close and protect computer when alarming; if not, please don't activate;

When city power is cut, battery voltage is low, UPS bypass, UPS is overheated, UPS is overloaded,

UPS is malfunctioned, UPS is disconnected, UPS is turned off etc, this software will count down before turned off.

Now we take UPS was disconnected and execute in 2 minutes as example, i.e. the countdown frame will appear when UPS is disconnected



After 2 minutes countdown, will close all ongoing programs and computer

If click "refrain from turning off the PC automatically", it will not protect the computer

If click "hide", the countdown frame will not appear and computer will turn off automatically in 2 minutes

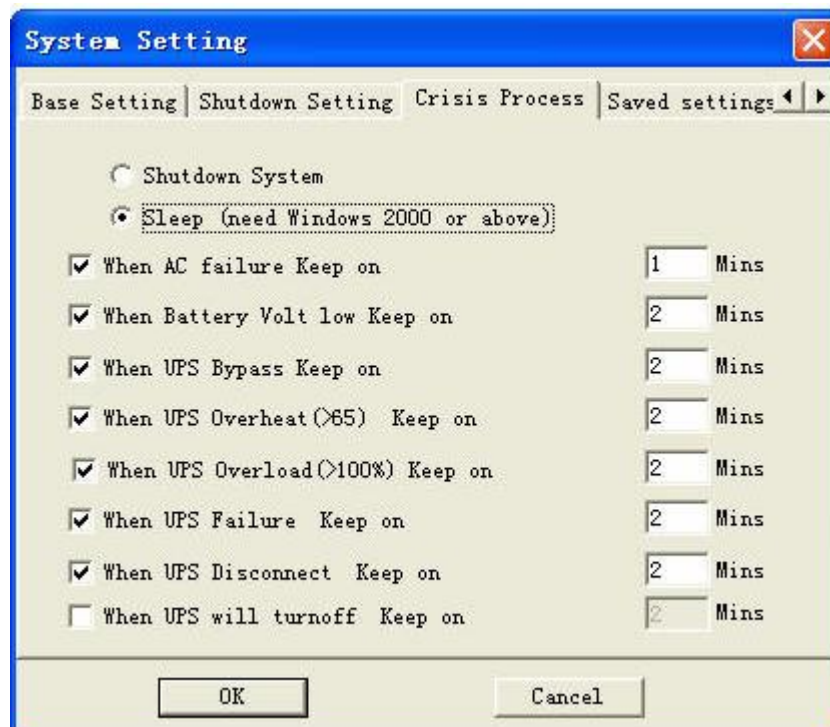
2) Choose sleep, please note “sleep” function can only be activated by Win2000 and UP system and

PC machine supports this function as well.

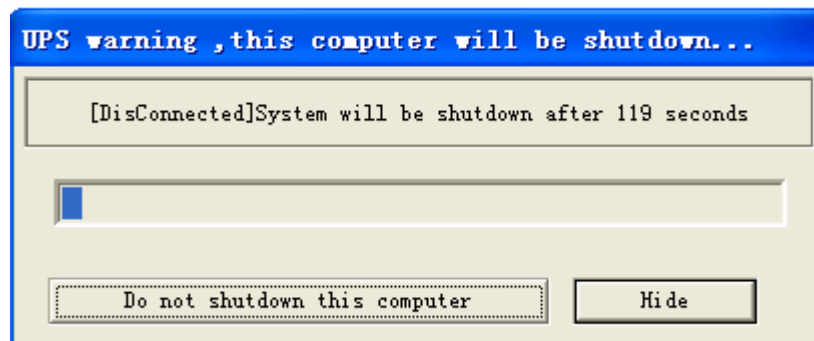
When city power is cut, battery voltage is low, UPS bypass, UPS is overheated, UPS is overloaded,

UPS is malfunctioned, UPS is disconnected, UPS is turned off etc, it will count down the sleep time.

Now we take UPS was disconnected and execute in 2 minutes as example, i.e. the countdown frame will appear when UPS is disconnected



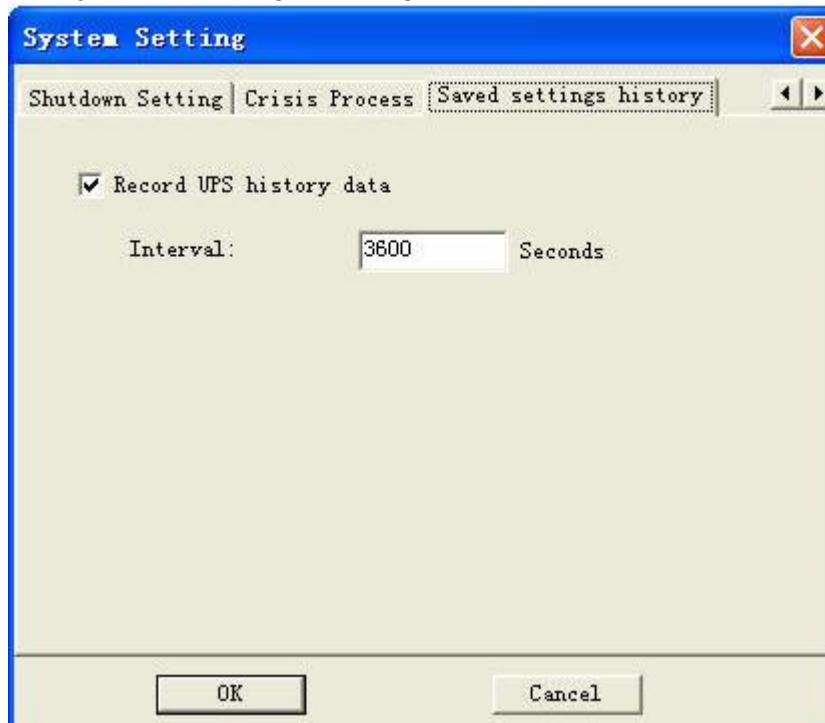
Computer entered SLEEP status after 2-minute countdown



If click “Refrain from turning off the PC automatically” , the countdown frame will disappear and the computer will not transfer to SLEEP status.

If click “hide” , the countdown frame will disappear and enter “SLEEP” status in 2 minutes

## History data saving setting



When set “whether save history data” as valid, software will save UPS history data at user’s predefined interval (can set the interval as one hour or longer if no special need)

When set “whether save history data” as invalid, software will not save UPS history data

## BP Alarm

Please start BP alarm function before use BP alarm

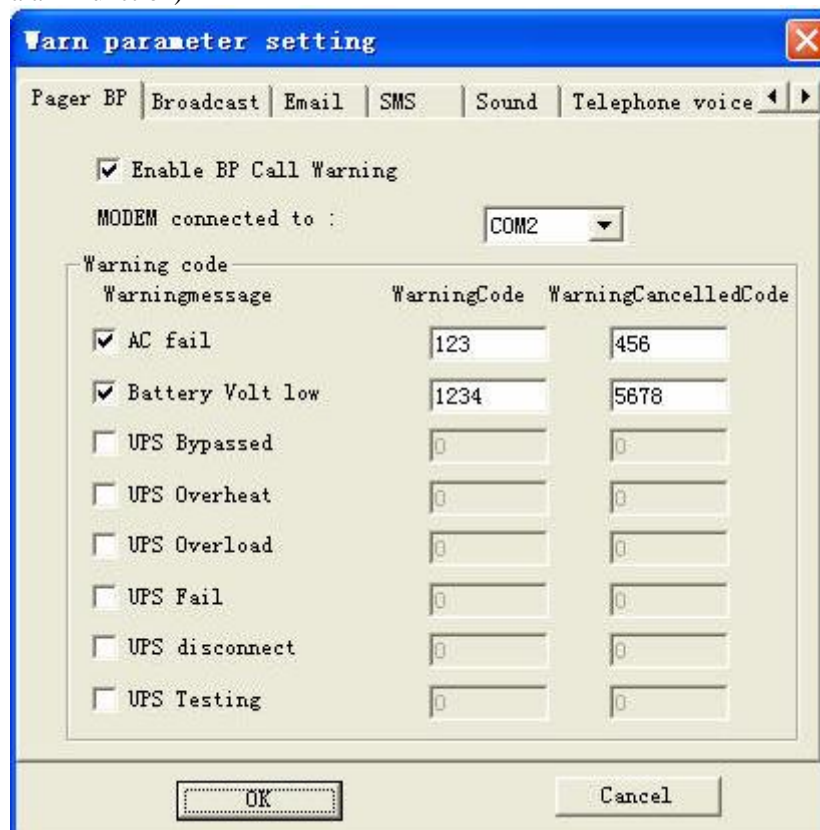
According to factual conditions, choose serial port in drop menu.

( this serial port should not conflict with UPS)

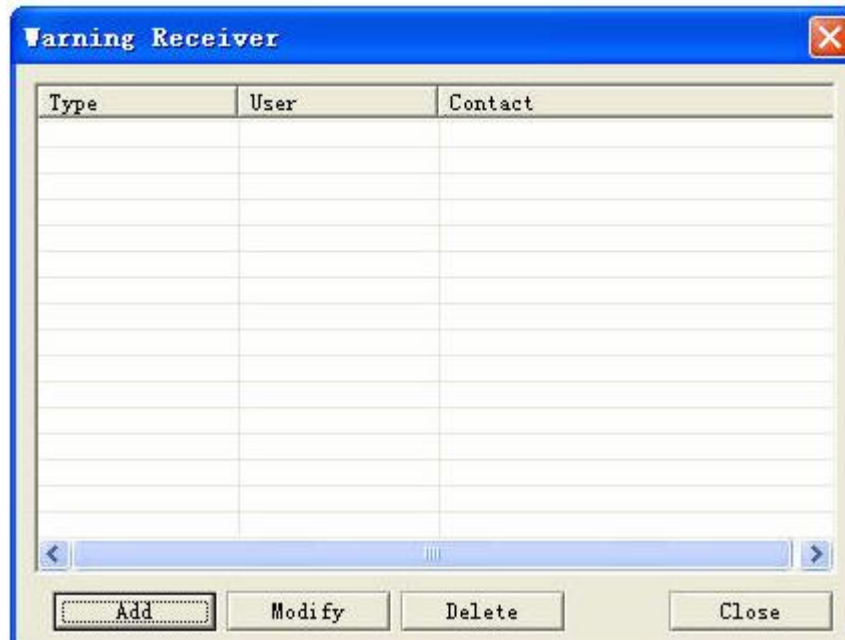
Alarm message, users themselves define the alarm code and alarm cancellation code For example: set “city power cut” by “123” and “alarm cancellation code” “456” ,BP machine will receive “123” message when city power is cut and will receive “456” when cancel alarm for ci ty power cuthow to send alarm message, alarm code and alarm cancellation code to target?

Please refer to illustration as below

( please activate alarm function and set alarm code and alarm cancellation code before use BP alarm function)



Choose alarm receiver, please enter the interface as below



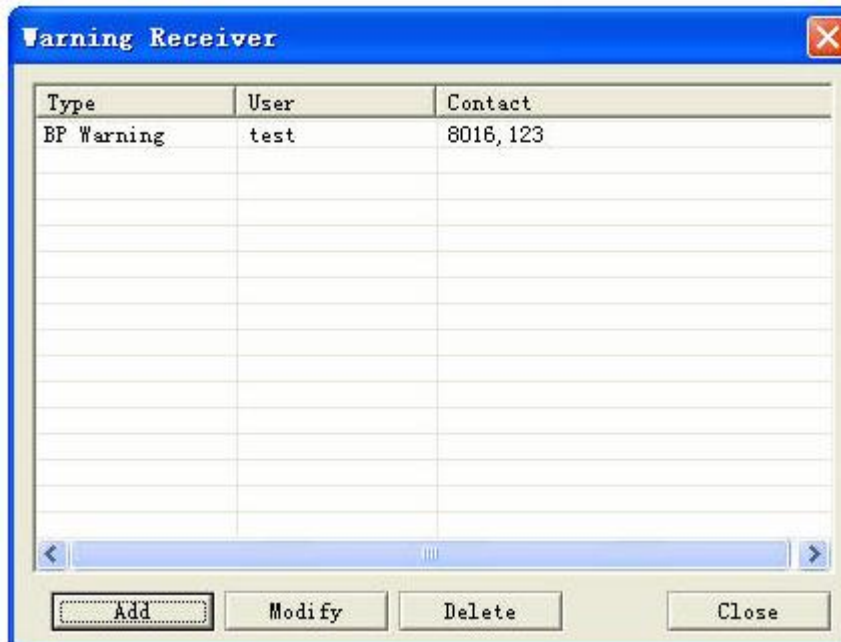
Click "add" as below:



Choose alarm mode as BP alarm and complete others according to prompts

Click "add" as below:





Now, BP alarm is well added

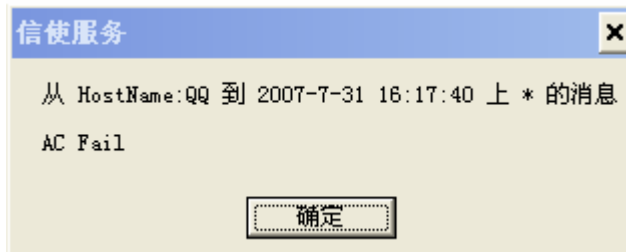
### Broadcast alarm

Please start network message alarming as below before using network broadcast alarming



Click “confirm” and when UPS status is changed software will send network message alarming according to the broadcast frequency set by user

When alarm is occurred, all computers in LAN and turned on messaging service will receive alarm as below( If broadcast frequency is set by N, will receive N windows like below when alarming)

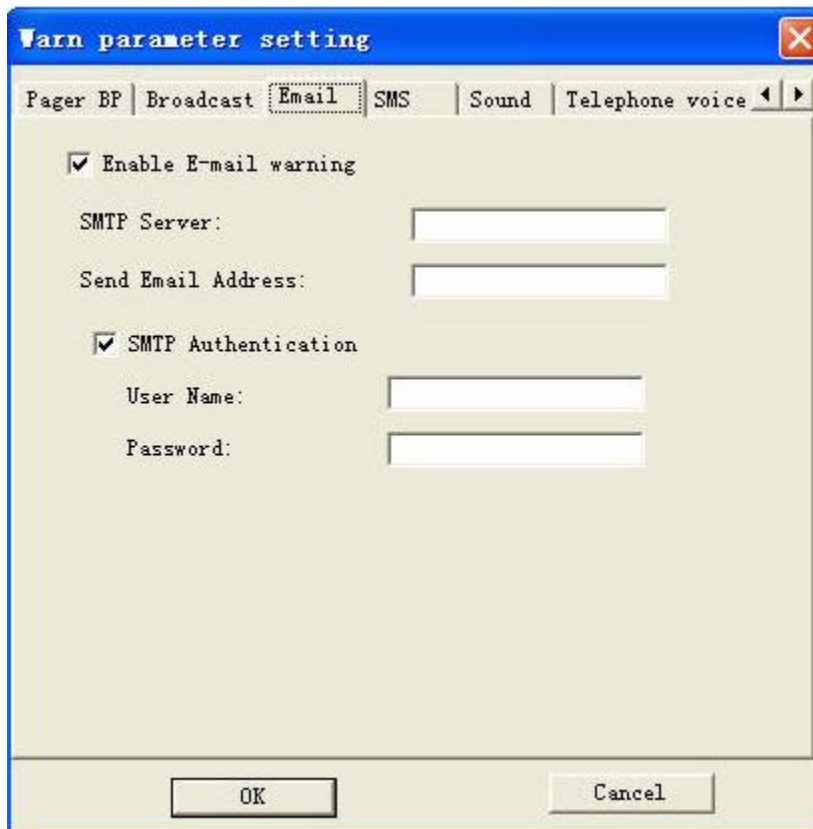


## Email

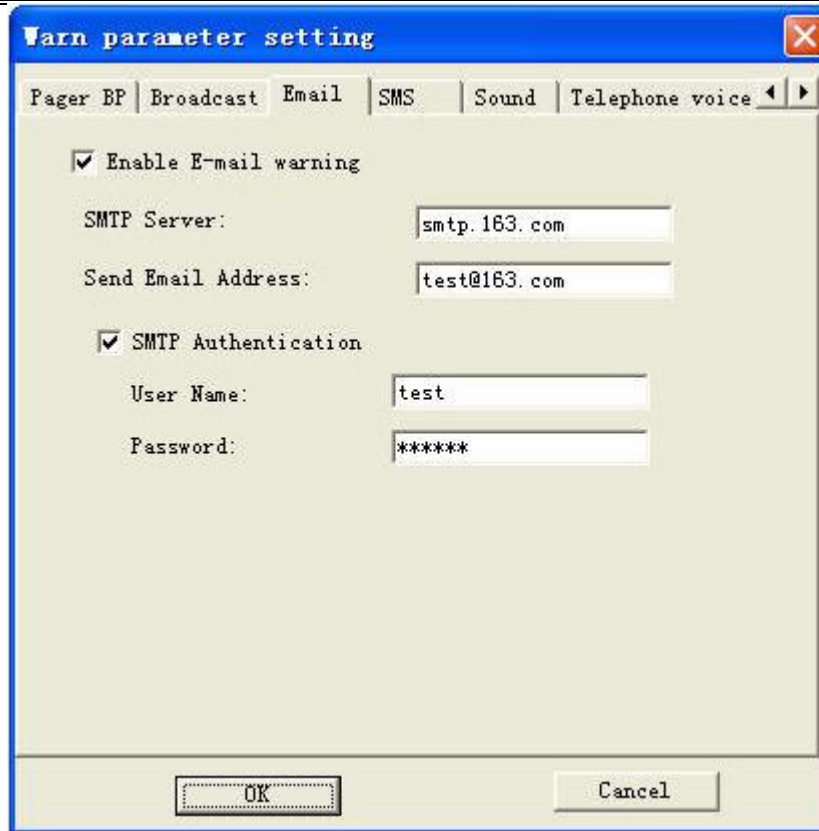
Please start Email alarm function before using Email alarming

Please set correct SMTP address, Email address, users and password etc. How to send alarming message by Email to target?

Refer to map as below:



For example: if the sender' s Email is [test@163.com](mailto:test@163.com), please input as below:

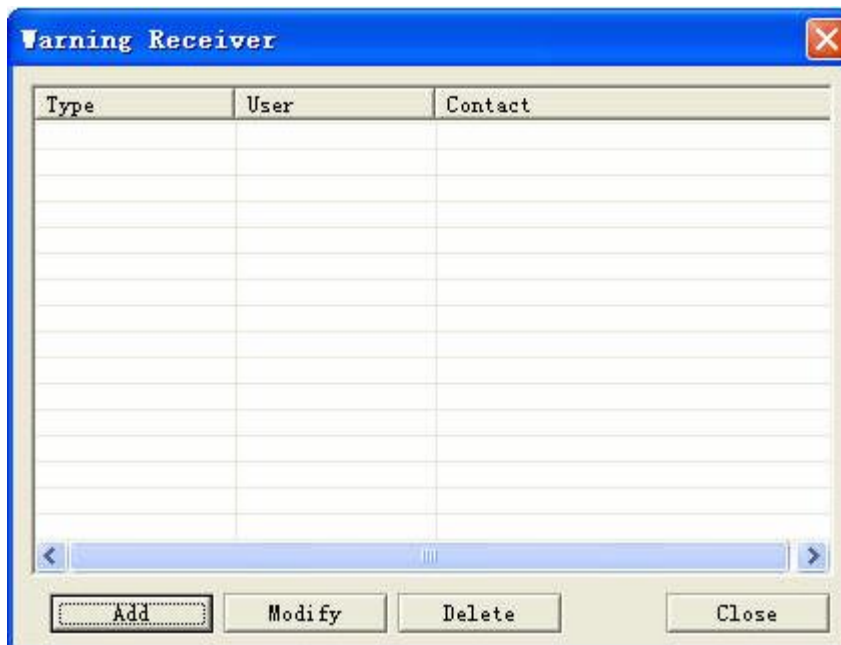


The dialog box is titled "Warn parameter setting" and has a tabbed interface. The "Email" tab is selected. It contains the following fields and options:

- Enable E-mail warning
- SMTP Server:
- Send Email Address:
- SMTP Authentication
- User Name:
- Password:

Buttons: OK, Cancel

Choose alarm receiver as below:



The dialog box is titled "Warning Receiver" and contains a table with the following columns: Type, User, and Contact. The table is currently empty.

Type	User	Contact

Buttons: Add, Modify, Delete, Close

Click "add" as below:

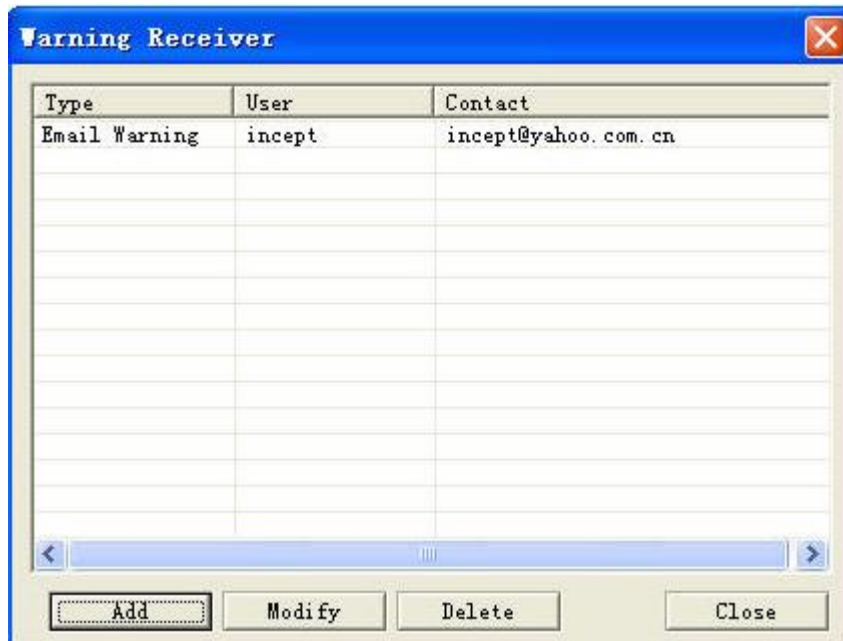


The dialog box titled "Warning ReceiverAdd" contains the following fields:

- Warn Mode:
- User:
- Email Address:

Buttons: Add, Cancel

Choose alarm mode by Email alarming and complete others according to prompts  
Click "add" as below



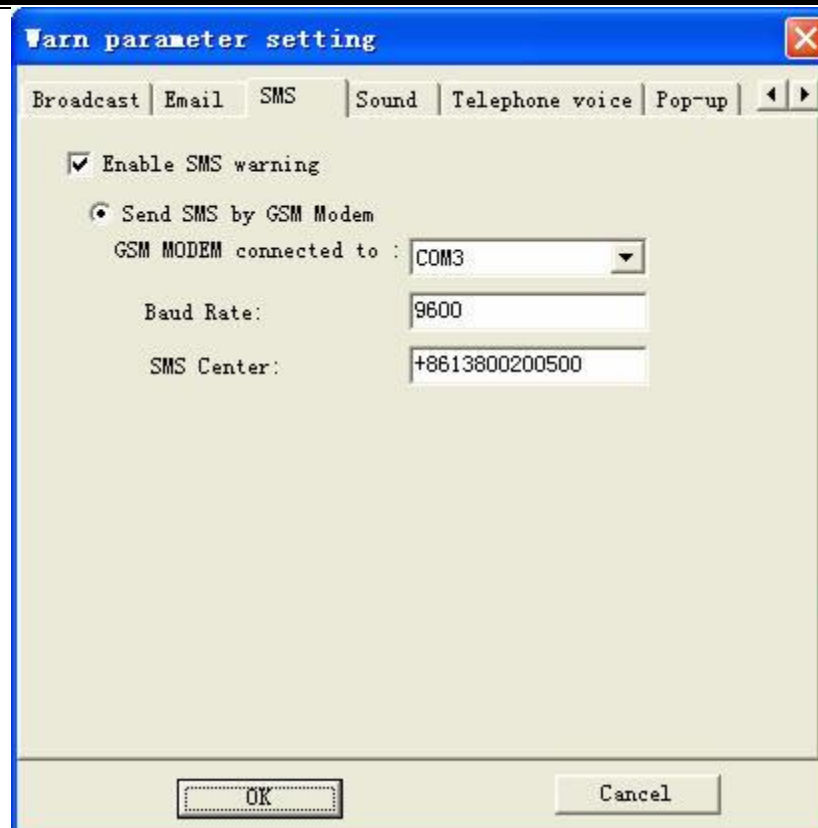
Type	User	Contact
Email Warning	incept	incept@yahoo.com.cn

Buttons: Add, Modify, Delete, Close

Now, Email alarming is well added

## SMS

Please start SMS alarming function before using

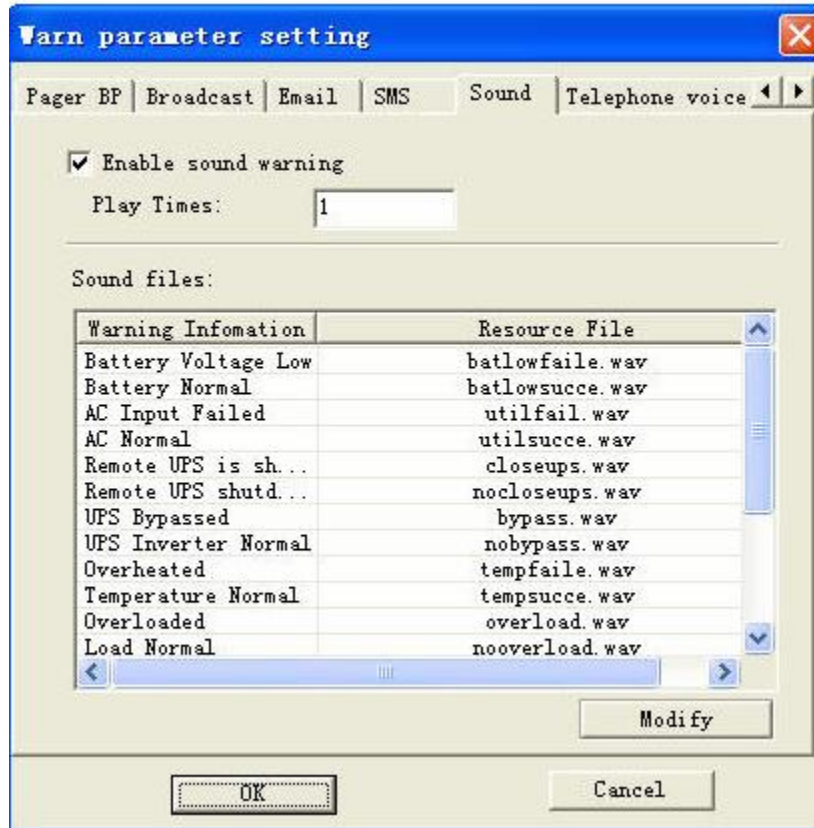


Set GSM Modem serial port and set baud rate according to Modem parameters and set correct message center.

For example: the message center is +8613800200500

## Sound

Please start sound alarm before using



According to sound frequency set by user, software will send corresponding alarm frequency when UPS status changed.

For example: when battery voltage is low, software will tell by speaker or other acoustics equipments connected with computer that “ please note, UPS battery voltage is low now”

## Telephone Voice

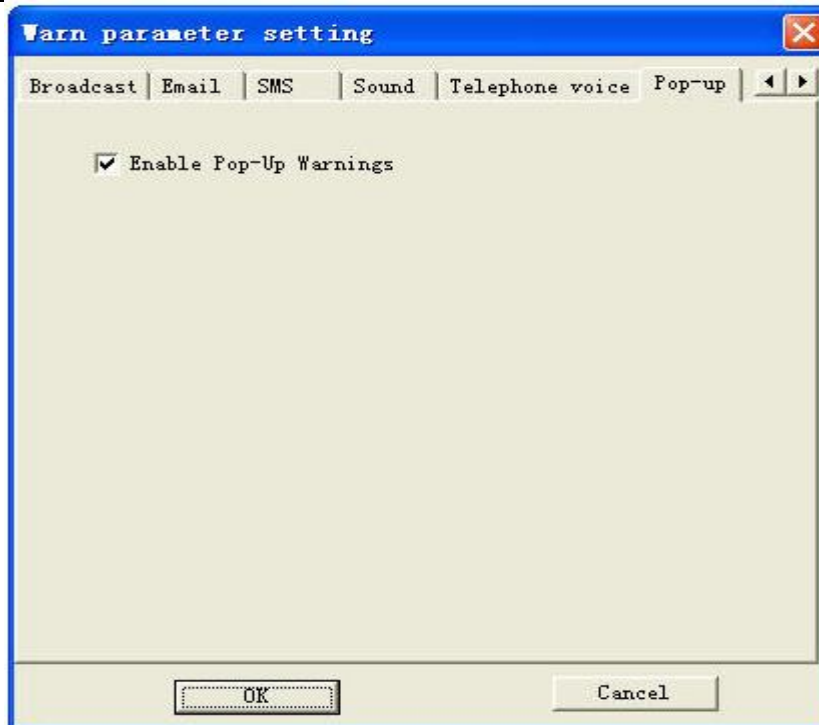
Please start telephone voice alarm before using



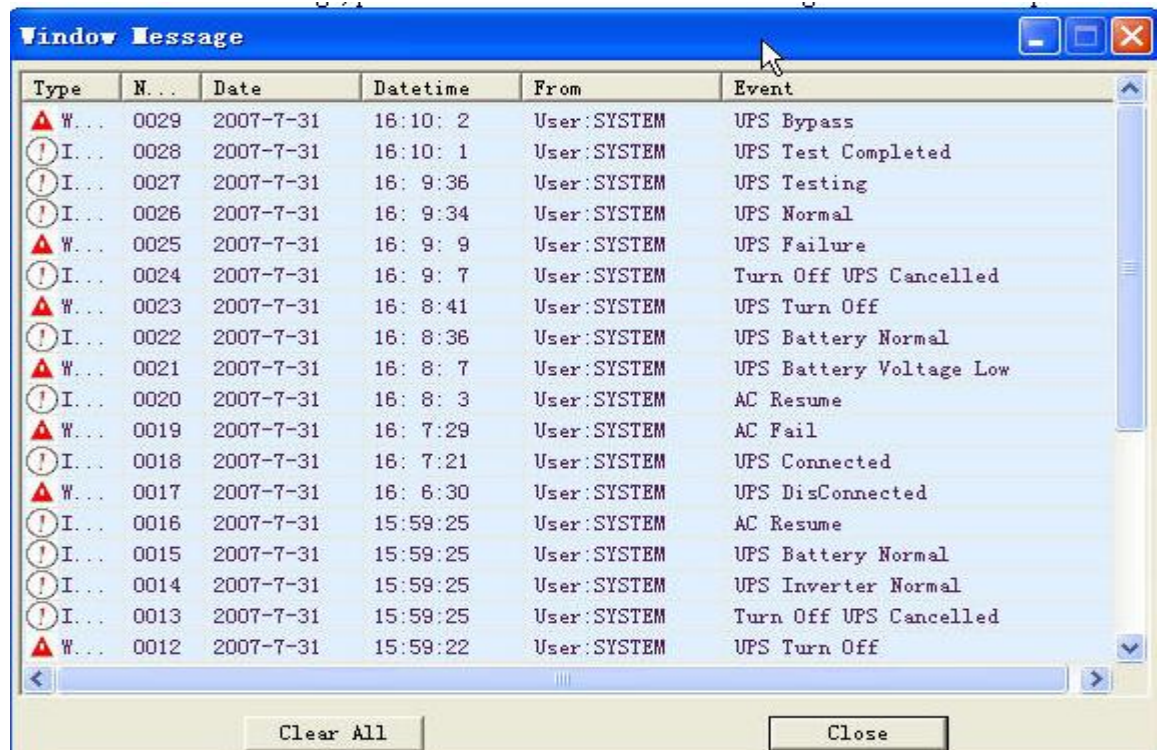
If there is voice Modem installed in system, please choose exact model in voice Modem; if no, please there is no exact model available in voice Modem

Window

Please start window alarm pop-up before using



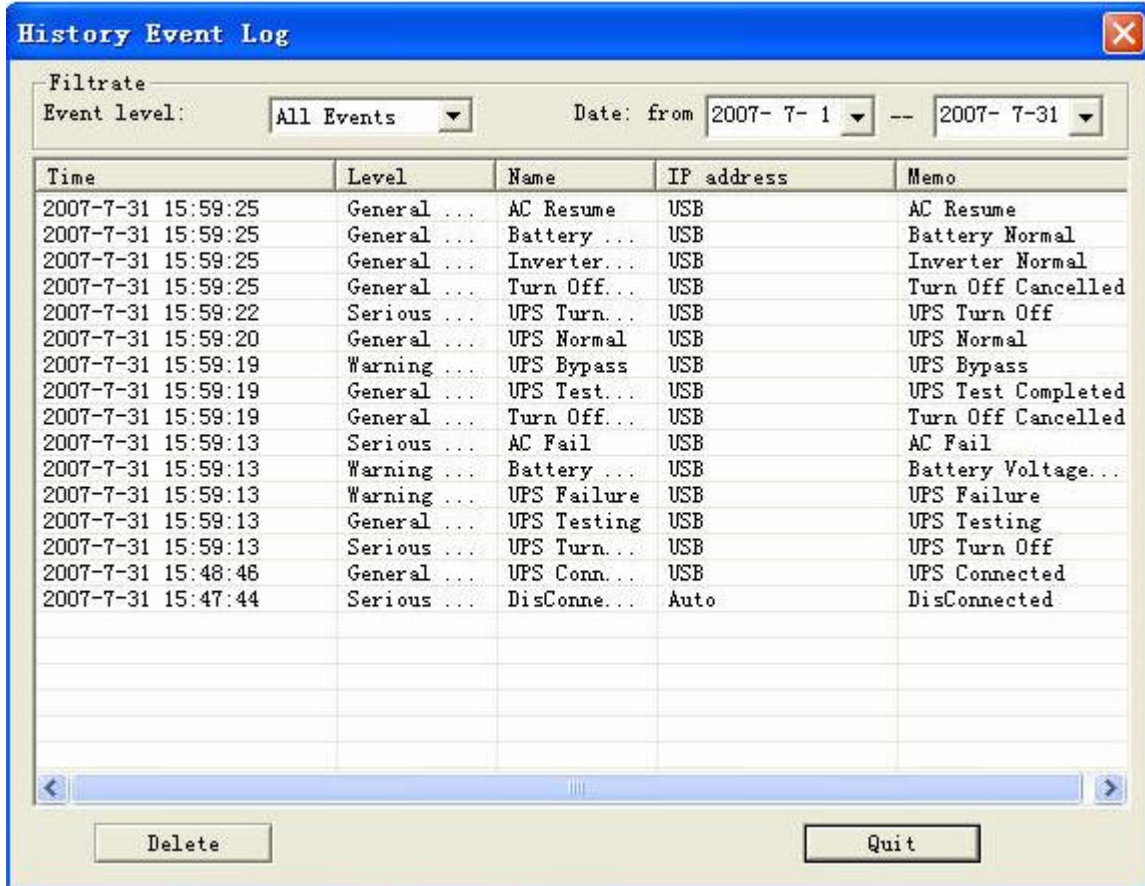
When alarming, there will be dialogue box popped up as below  
 Closing this dialogue box, it will appears again when next alarm; minimizing it, it will not pop up when next alarm and you need to maximize it before reading it  
 Need to delete alarm message, please click "clear" and all alarm messages will be cleared up





## Check Hi story Event

Click history event record and enter



The screenshot shows a window titled "History Event Log" with a blue title bar and a close button. Below the title bar is a "Filtrate" section with an "Event level:" dropdown menu set to "All Events" and a "Date: from" range from "2007- 7- 1" to "2007- 7-31". The main area contains a table with the following data:

Time	Level	Name	IP address	Memo
2007-7-31 15:59:25	General ...	AC Resume	USB	AC Resume
2007-7-31 15:59:25	General ...	Battery ...	USB	Battery Normal
2007-7-31 15:59:25	General ...	Inverter...	USB	Inverter Normal
2007-7-31 15:59:25	General ...	Turn Off...	USB	Turn Off Cancelled
2007-7-31 15:59:22	Serious ...	UPS Turn...	USB	UPS Turn Off
2007-7-31 15:59:20	General ...	UPS Normal	USB	UPS Normal
2007-7-31 15:59:19	Warning ...	UPS Bypass	USB	UPS Bypass
2007-7-31 15:59:19	General ...	UPS Test...	USB	UPS Test Completed
2007-7-31 15:59:19	General ...	Turn Off...	USB	Turn Off Cancelled
2007-7-31 15:59:13	Serious ...	AC Fail	USB	AC Fail
2007-7-31 15:59:13	Warning ...	Battery ...	USB	Battery Voltage...
2007-7-31 15:59:13	Warning ...	UPS Failure	USB	UPS Failure
2007-7-31 15:59:13	General ...	UPS Testing	USB	UPS Testing
2007-7-31 15:59:13	Serious ...	UPS Turn...	USB	UPS Turn Off
2007-7-31 15:48:46	General ...	UPS Conn...	USB	UPS Connected
2007-7-31 15:47:44	Serious ...	DisConne...	Auto	DisConnected

At the bottom of the window, there are two buttons: "Delete" and "Quit".

In this list, there are UPS event' s rating, time, title and its monitoring PC address recorded

- 1) Providing filter mode by event' s rating
- 2) Providing filter mode by time
- 3)Also providing filter mechanism for deleting history event

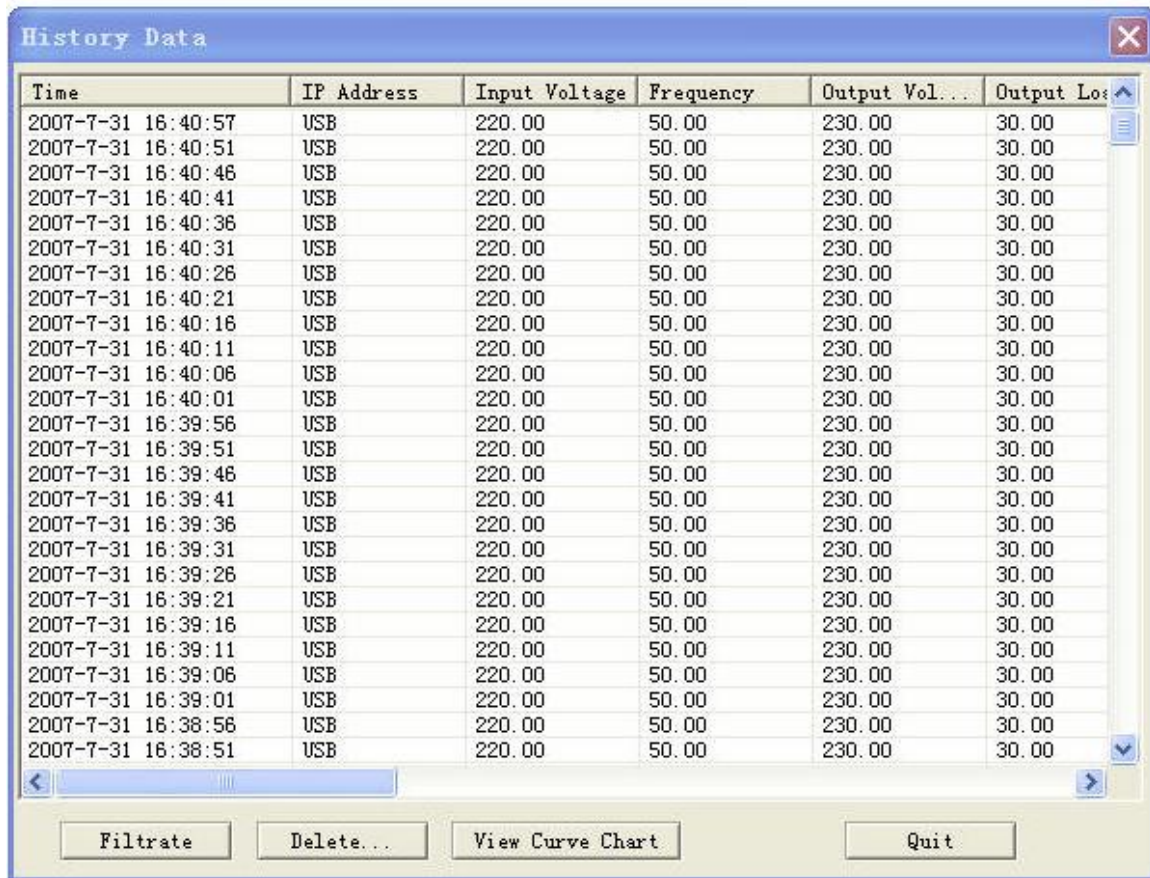


Choose different deleting mode. Like

- 1) deleting dated from 2007-7-1 to 2007-7-31;
- 2) deleting all dated one day ago;
- 3) deleting all records

Check History Data

Click "history data record" and enter:



Time	IP Address	Input Voltage	Frequency	Output Vol...	Output Lo...
2007-7-31 16:40:57	USB	220.00	50.00	230.00	30.00
2007-7-31 16:40:51	USB	220.00	50.00	230.00	30.00
2007-7-31 16:40:46	USB	220.00	50.00	230.00	30.00
2007-7-31 16:40:41	USB	220.00	50.00	230.00	30.00
2007-7-31 16:40:36	USB	220.00	50.00	230.00	30.00
2007-7-31 16:40:31	USB	220.00	50.00	230.00	30.00
2007-7-31 16:40:26	USB	220.00	50.00	230.00	30.00
2007-7-31 16:40:21	USB	220.00	50.00	230.00	30.00
2007-7-31 16:40:16	USB	220.00	50.00	230.00	30.00
2007-7-31 16:40:11	USB	220.00	50.00	230.00	30.00
2007-7-31 16:40:06	USB	220.00	50.00	230.00	30.00
2007-7-31 16:40:01	USB	220.00	50.00	230.00	30.00
2007-7-31 16:39:56	USB	220.00	50.00	230.00	30.00
2007-7-31 16:39:51	USB	220.00	50.00	230.00	30.00
2007-7-31 16:39:46	USB	220.00	50.00	230.00	30.00
2007-7-31 16:39:41	USB	220.00	50.00	230.00	30.00
2007-7-31 16:39:36	USB	220.00	50.00	230.00	30.00
2007-7-31 16:39:31	USB	220.00	50.00	230.00	30.00
2007-7-31 16:39:26	USB	220.00	50.00	230.00	30.00
2007-7-31 16:39:21	USB	220.00	50.00	230.00	30.00
2007-7-31 16:39:16	USB	220.00	50.00	230.00	30.00
2007-7-31 16:39:11	USB	220.00	50.00	230.00	30.00
2007-7-31 16:39:06	USB	220.00	50.00	230.00	30.00
2007-7-31 16:39:01	USB	220.00	50.00	230.00	30.00
2007-7-31 16:38:56	USB	220.00	50.00	230.00	30.00
2007-7-31 16:38:51	USB	220.00	50.00	230.00	30.00

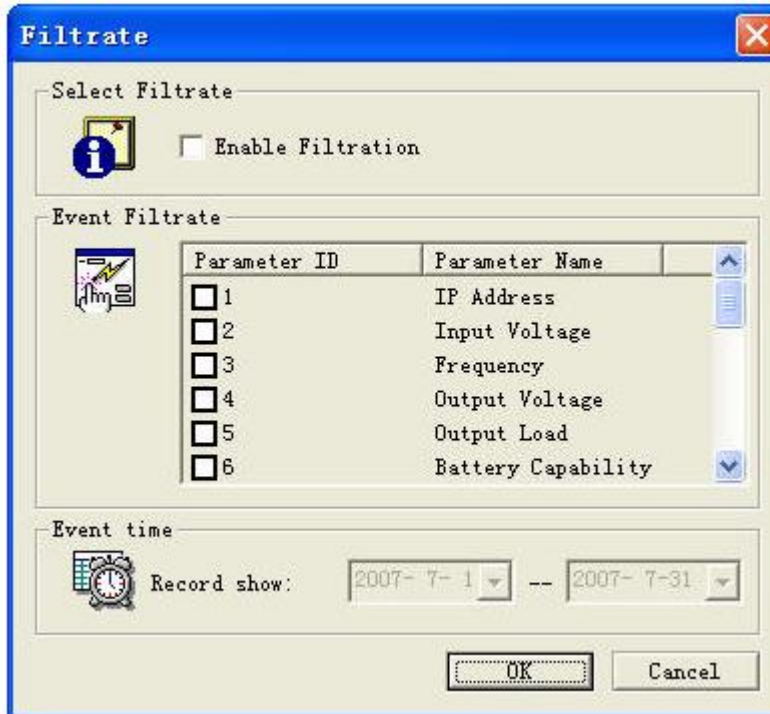
All that listed are UPS history data and the time interval is defined by users themselves.

Now there are input voltage, Frequency, Output voltage and output load etc

IP address: if the UPS is LAN connected, it shows your chosen communication interface like USB, COM1

If the UPS is long-distant, it shows long-distance monitoring IP address like 192.168.0.2

1) Filtering record function



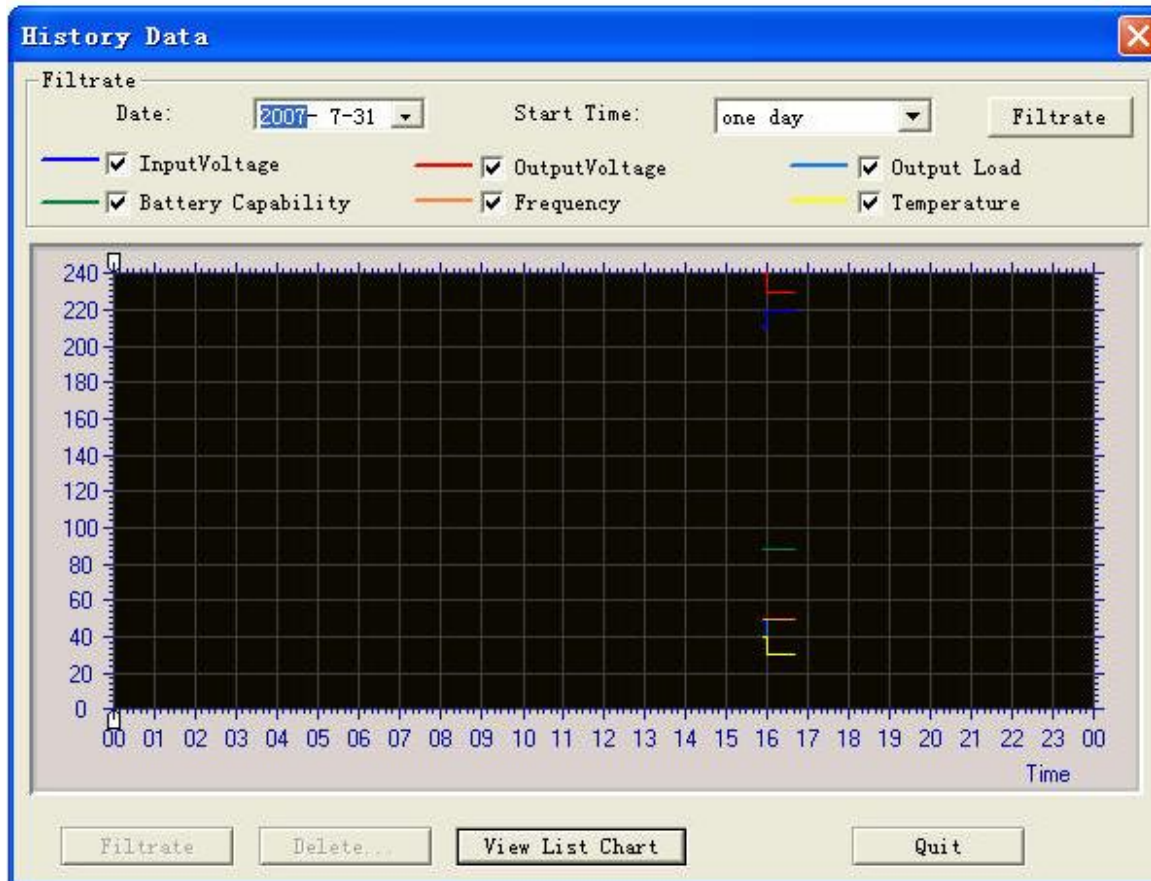
Providing filtering mode by UPS relative parameters and mode by time

2) Deleting record function



Providing 1, deleting by period; 2, deleting certain day' s record; 3, deleting all three modes

3) Checking curve map

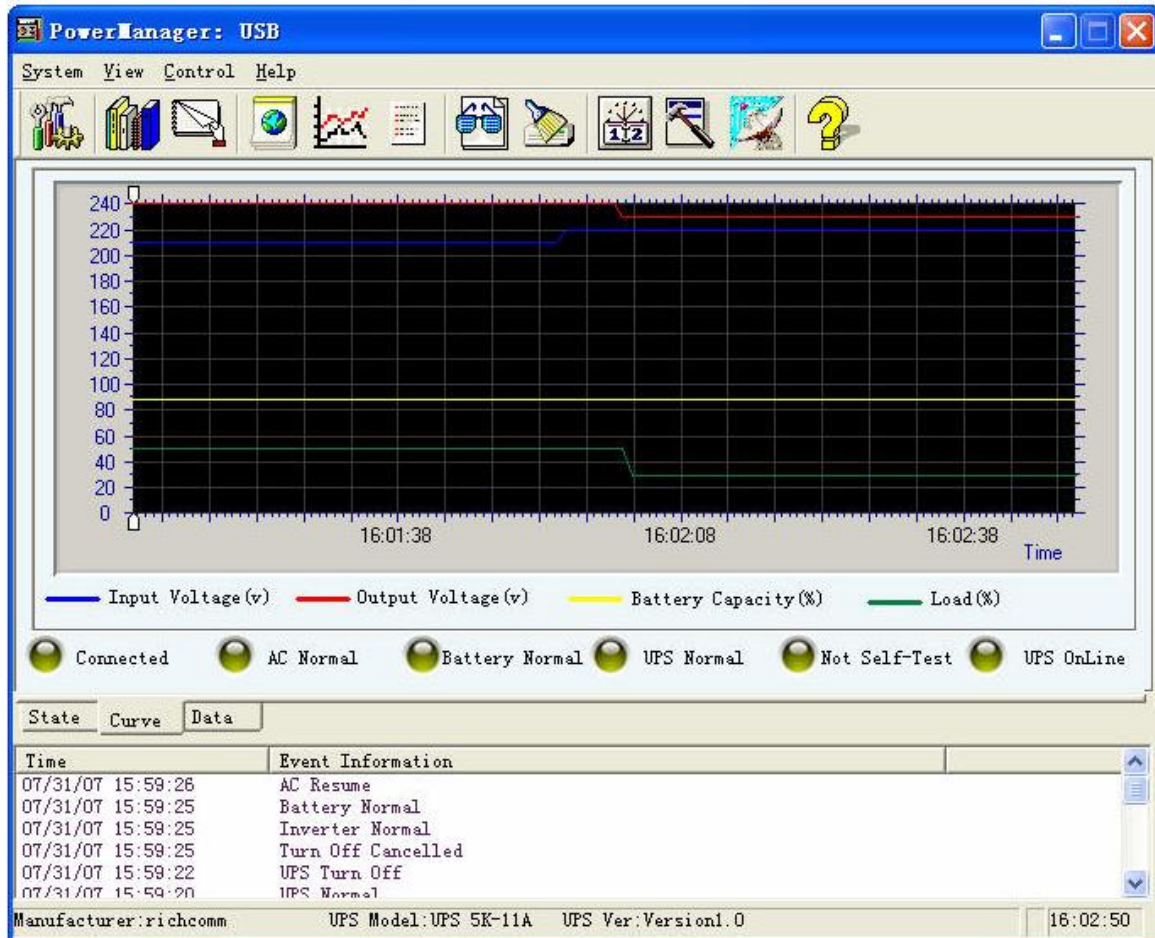


Checking UPS status by curve map, filtering by parameters and choose time and period, reflecting UPS status by form of curve

## Check curve map

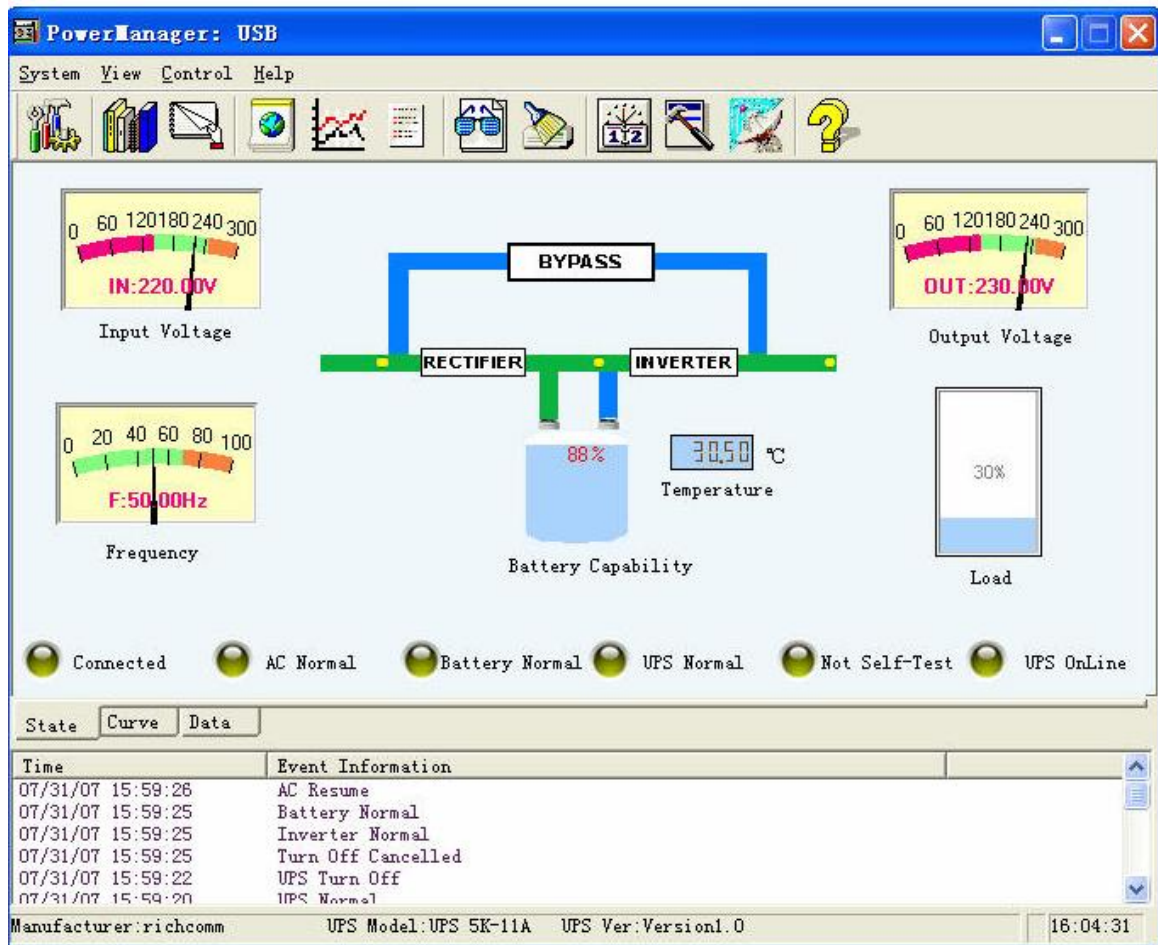
Click “check curve map” as below

In the curve map, we can clearly read different colors representing input voltage, output voltage, battery capacity and loads change in a period

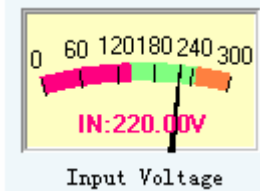


## Check State Map

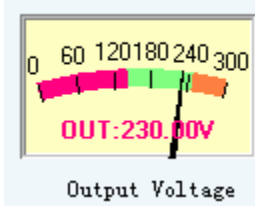
Click check state map as below ( this is UPS normal state map)



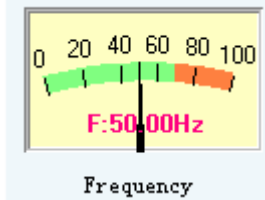
By this state map, we can read data like input voltage, output voltage, frequency, battery capacity, temperature inside UPS and load etc,



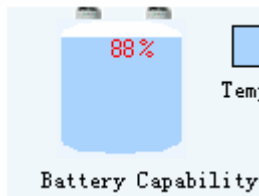
It means the input voltage now is 220.00V;



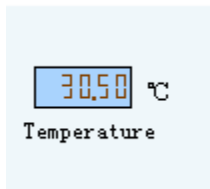
it means the output voltage now is 220.00V;



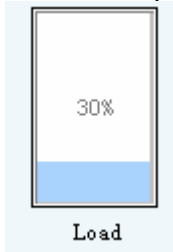
it means the voltage frequency now is 50.00Hz



It means the battery capacity now is 100%;



it means the temperature inside UPS now is 30.50 Celsius degrees;



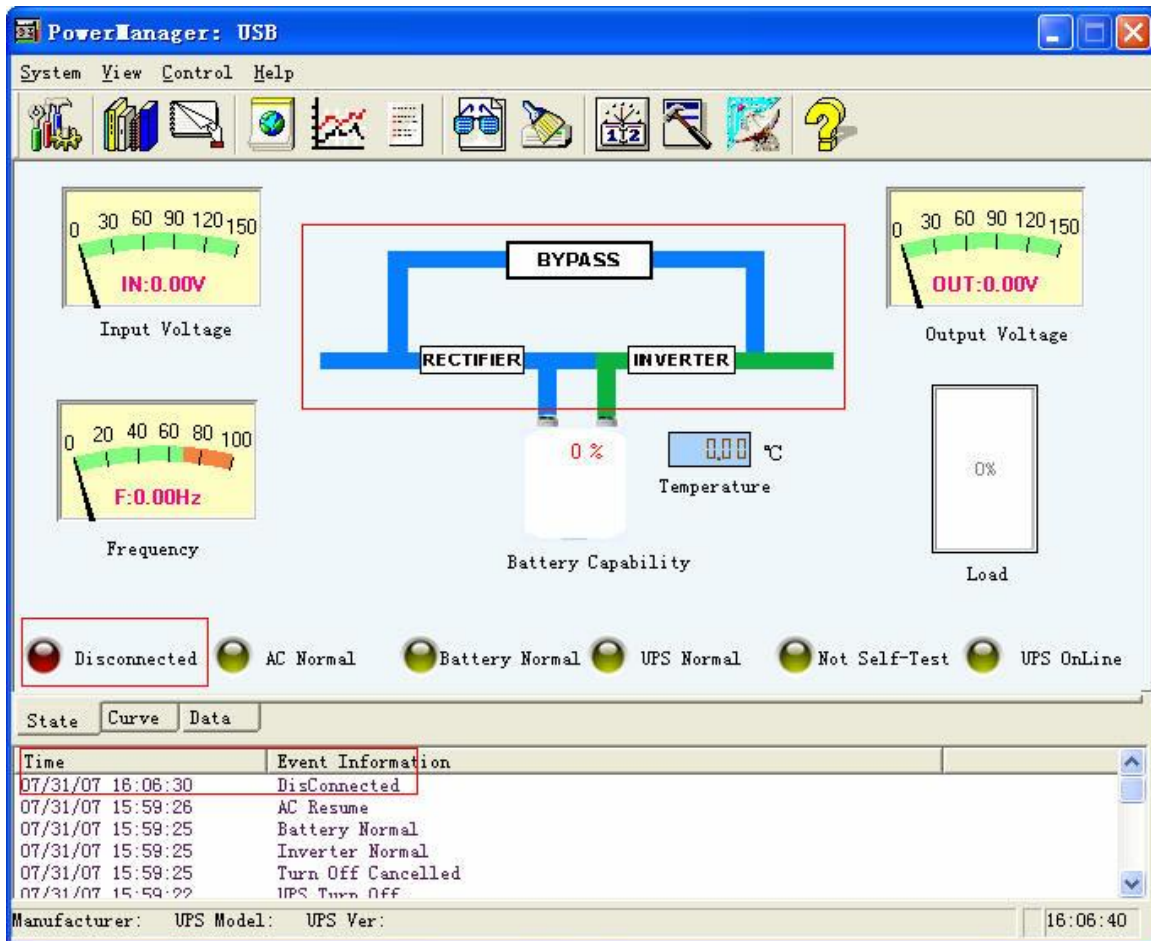
it means the output load now is 5%

By this map, we can check alarming situation: UPS disconnected, city power cut, low battery voltage, UPS shutdown, UPS malfunction, testing and bypass etc

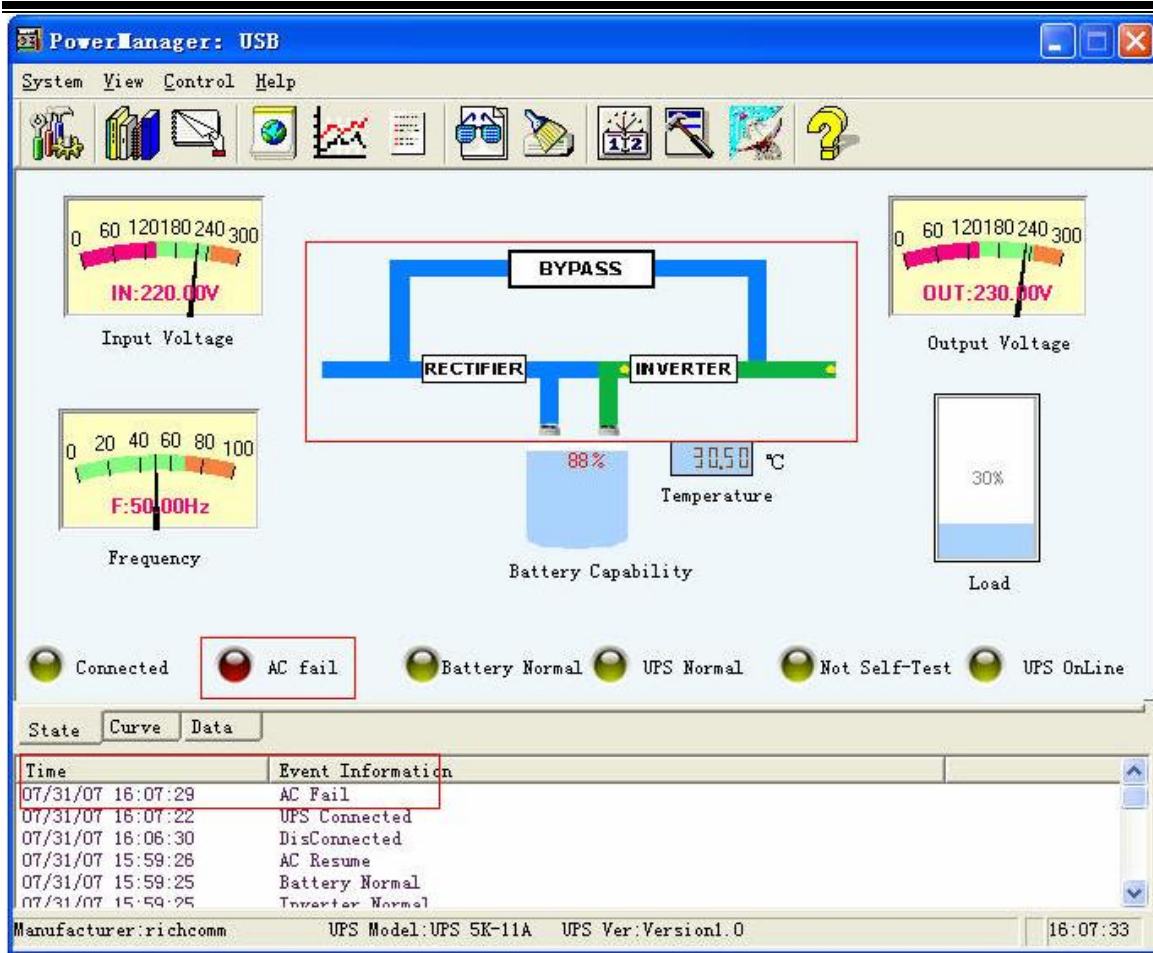
1: When UPS is disconnected as map below: the streaming line stopped, the indicator for UPS disconnected turns red and



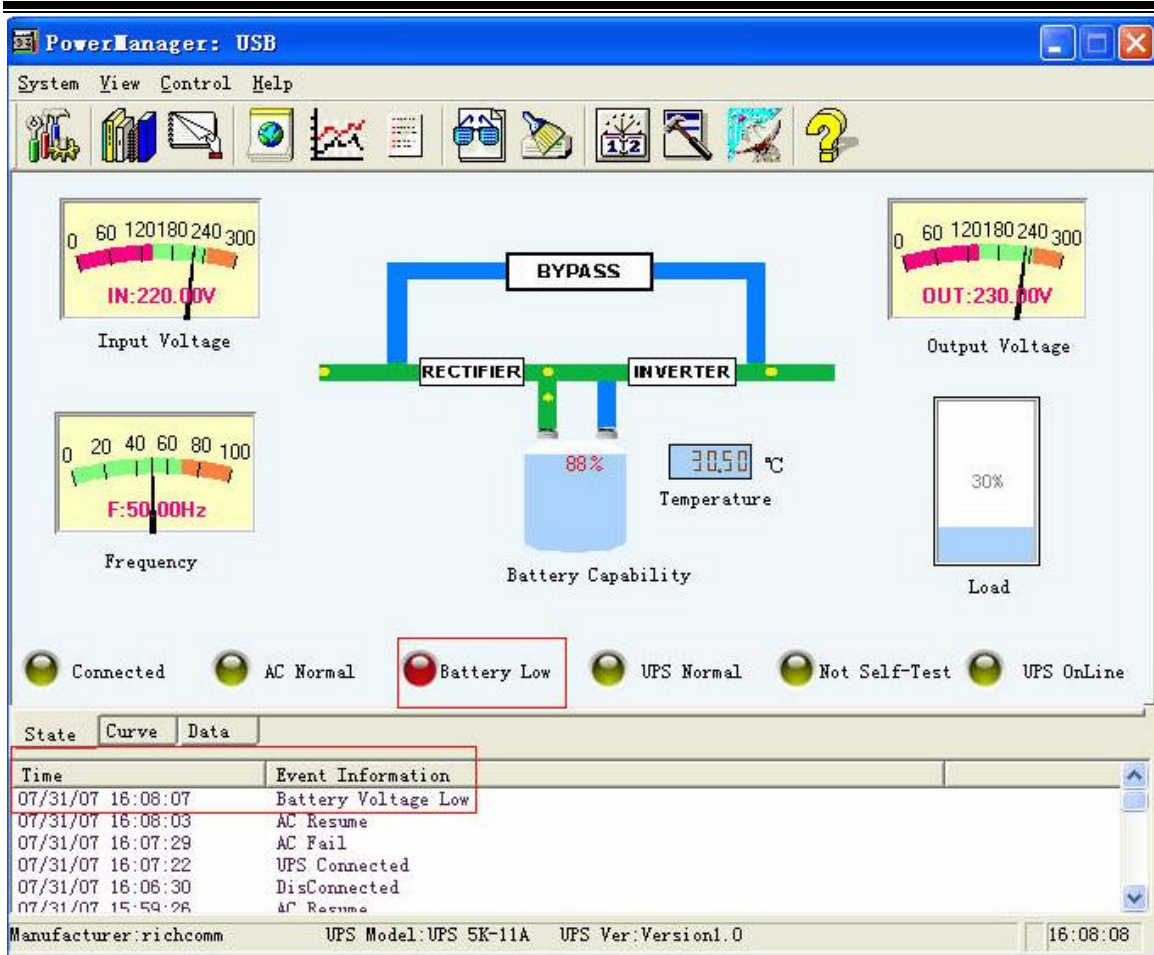
UPS communication disconnected is messaged in alarming column.



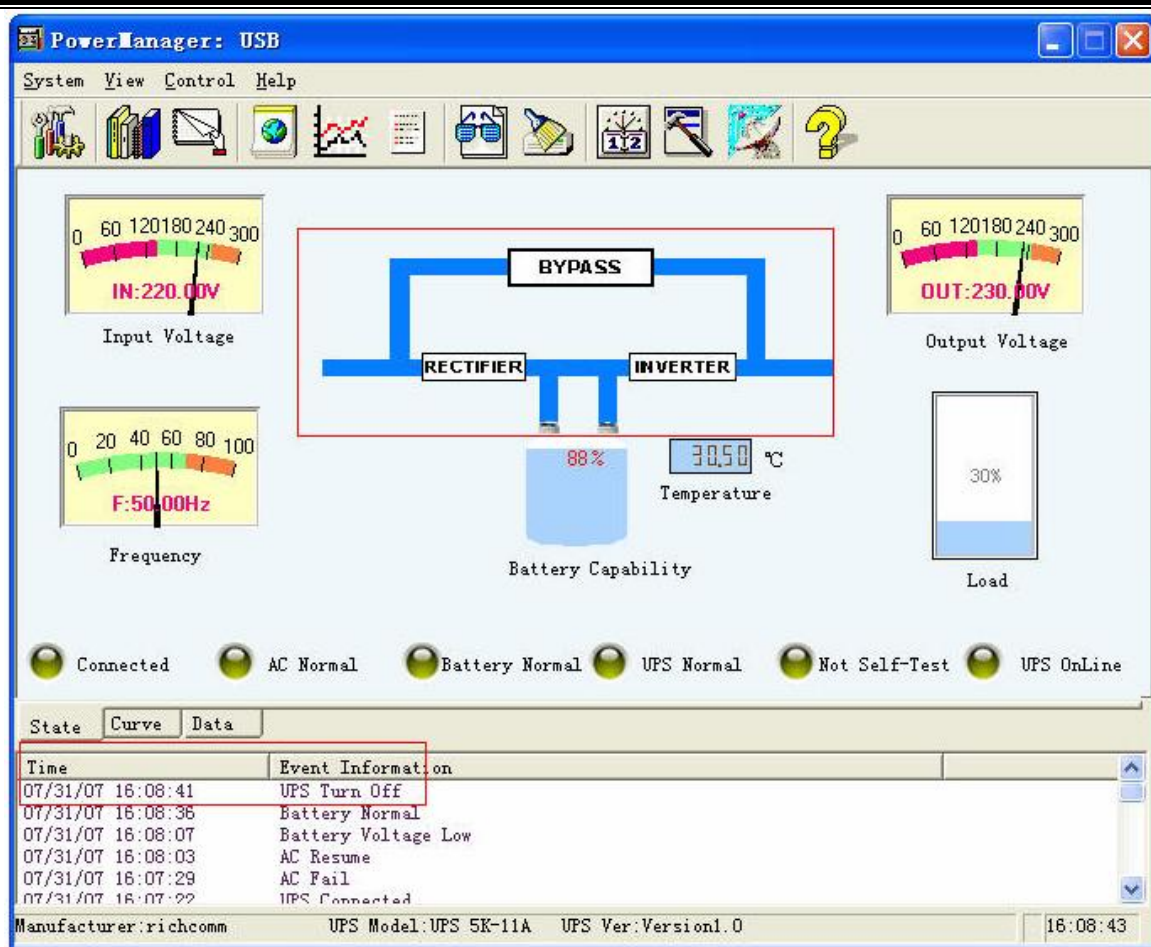
2: When city power is cut as map below: the streaming line is extended from battery, the indicator for city power cut turns red and city power cut is messaged in the alarming column



3: when battery voltage is low as map below: the indicator for low battery voltage turns red and abnormal battery voltage is messaged in the alarming column

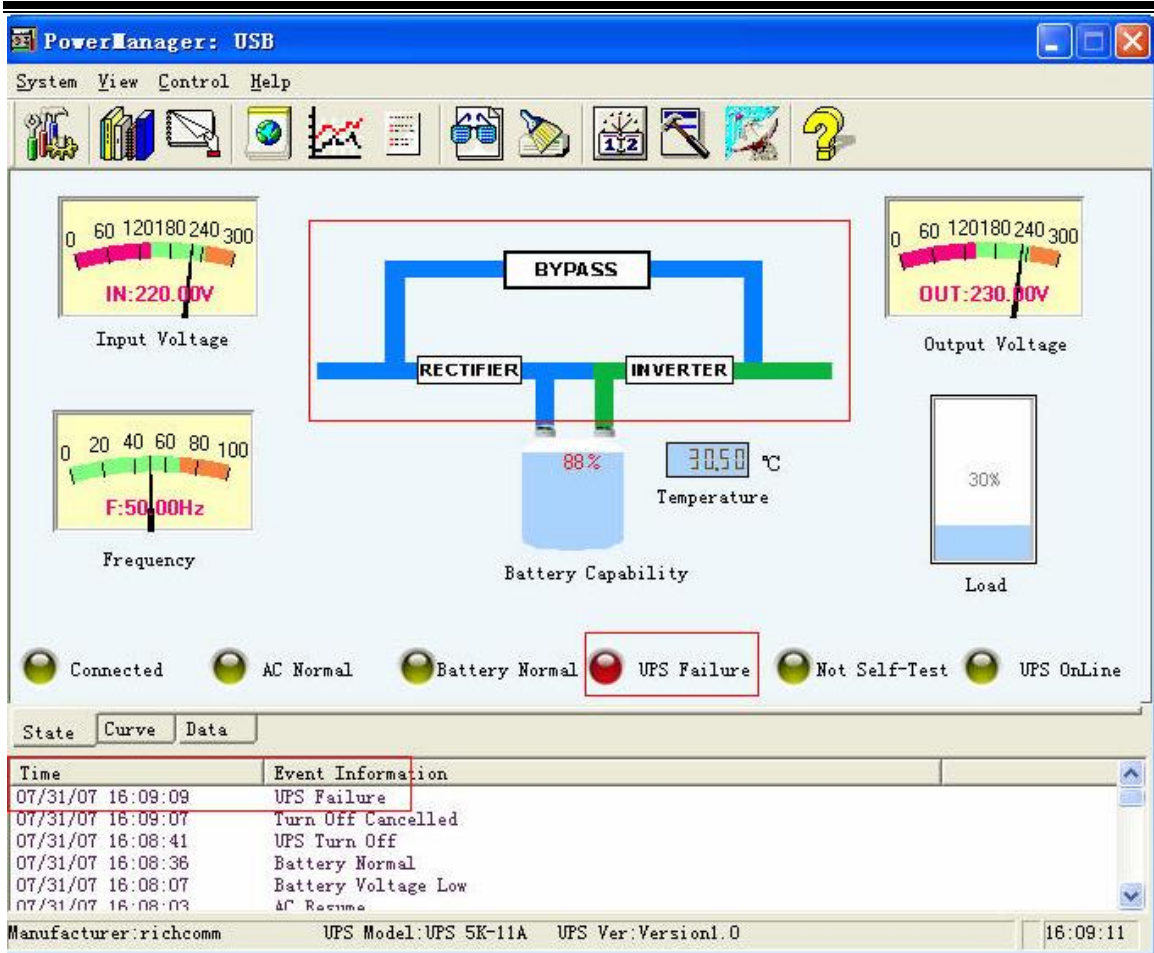


4: When UPS is shut down as map below: the streaming line is fixedly and UPS shutdown is messaged in the alarming column



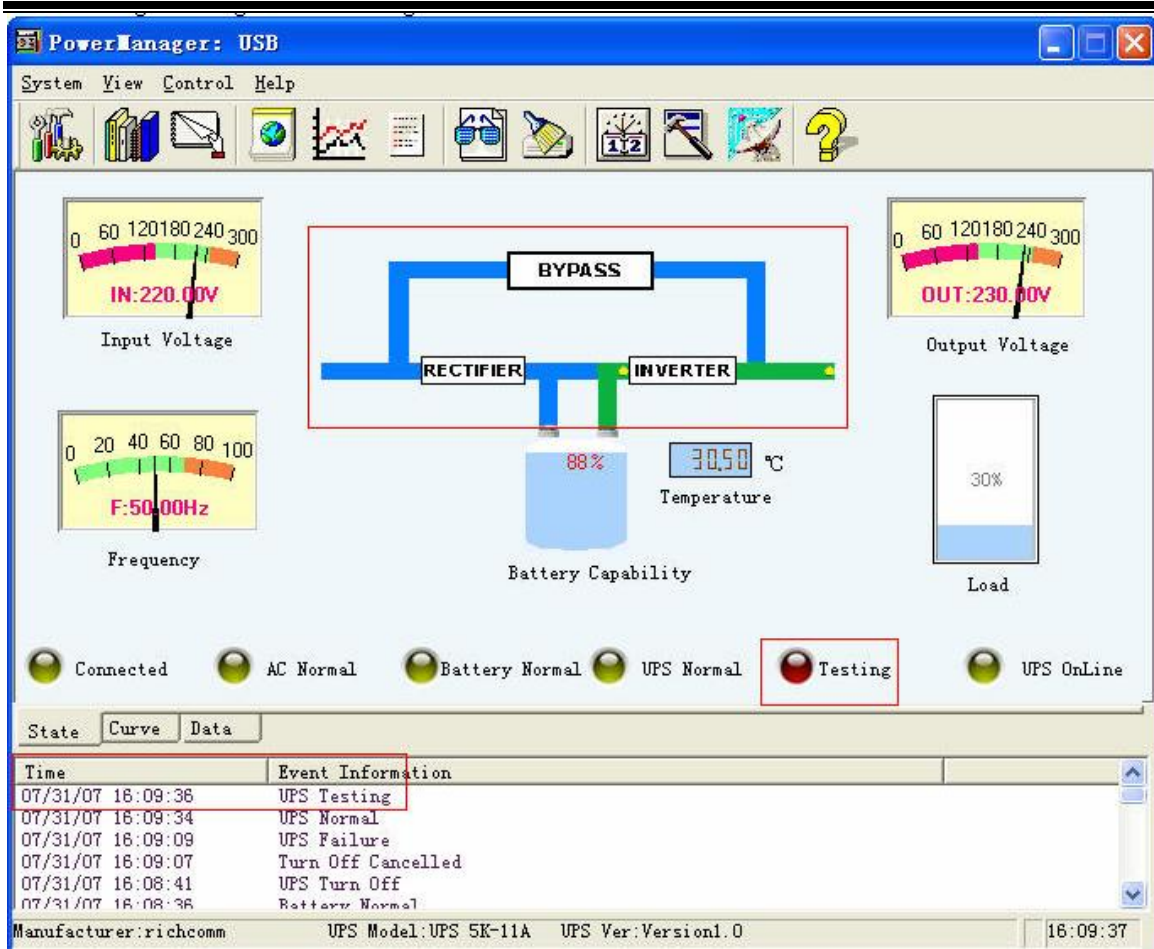
5: When UPS is malfunctioned as map below: the streaming line is fixedly and there is exclamatory mark in the middle,

the indicator for UPS malfunction turns red and UPS malfunction is messaged in the alarming column



6: When testing as map below: the streaming line is extended from the battery, the indicator for testing turns red and

UPS testing is messaged in the alarming column




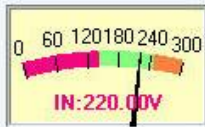
7: When bypass as map below: the streaming line passed by BYPASS, the indicator for BYPASS turns red and

UPS BYPASS is messaged in the alarming column

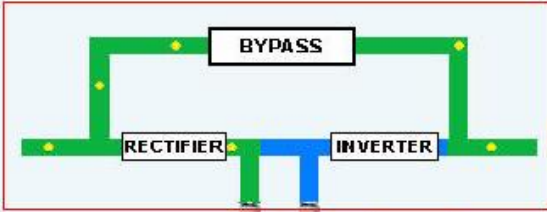
PowerManager: USB
[Min] [Max] [Close]


System View Control Help



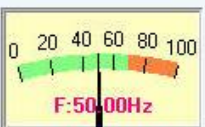


Input Voltage







Output Voltage




Frequency



Battery Capability



Temperature



Load

Connected
 AC Normal
 Battery Normal
 UPS Normal
 Not Self-Test
 UPS Bypassed

State
Curve
Data

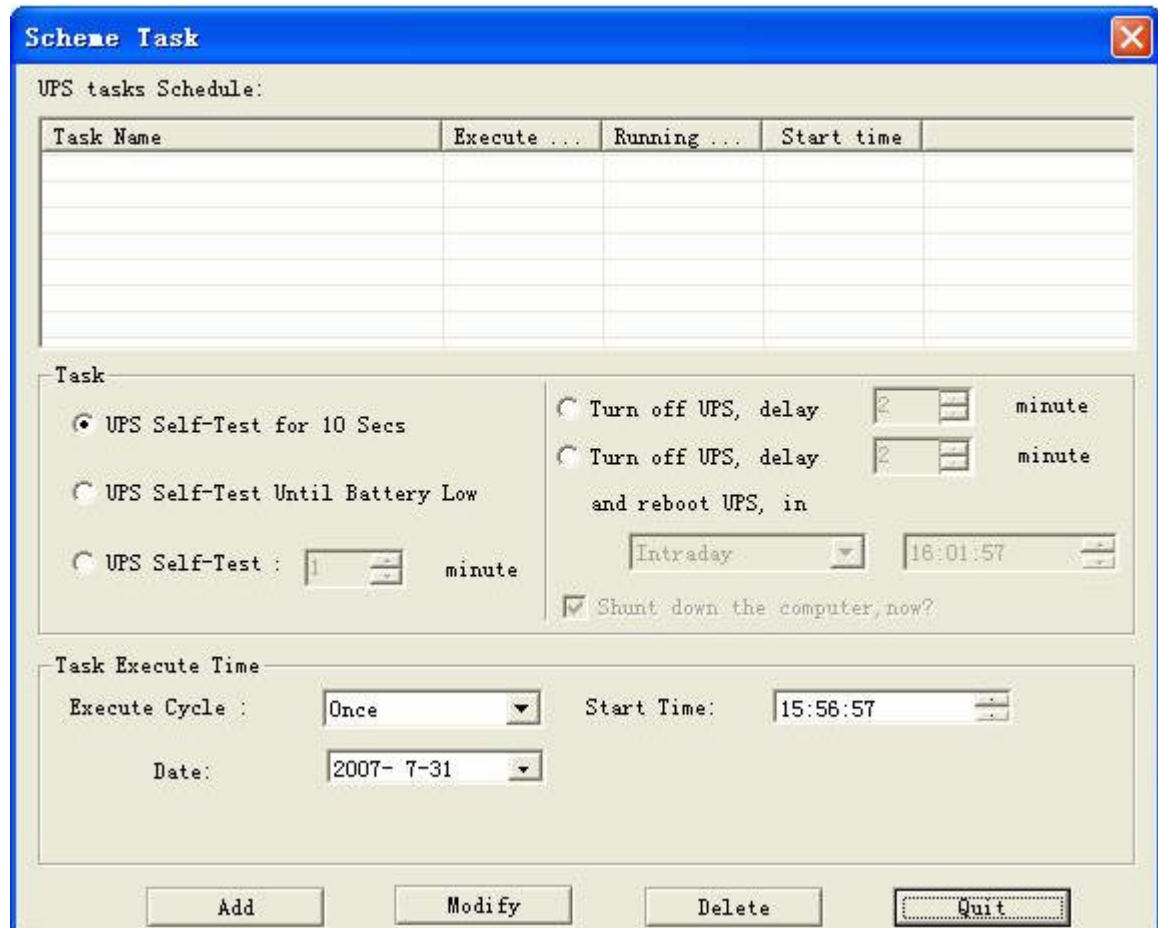
Time	Event Information
07/31/07 16:10:03	UPS Bypass
07/31/07 16:10:01	UPS Test Completed
07/31/07 16:09:36	UPS Testing
07/31/07 16:09:34	UPS Normal
07/31/07 16:09:09	UPS Failure
07/31/07 16:09:07	Turn Off Cancelled

Manufacturer: richcomm
UPS Model: UPS 5K-11A
UPS Ver: Version 1.0
16:10:04

## UPS Control

Scheme Task

click “UPS Scheme Task” as below



**Scheme Task**

UPS tasks Schedule:

Task Name	Execute ...	Running ...	Start time

**Task**

UPS Self-Test for 10 Secs  
 UPS Self-Test Until Battery Low  
 UPS Self-Test : 1 minute

Turn off UPS, delay 2 minute  
 Turn off UPS, delay 2 minute and reboot UPS, in Intraday 16:01:57

Shunt down the computer, now?

**Task Execute Time**

Execute Cycle : Once Start Time: 15:58:57

Date: 2007- 7-31

Add Modify Delete Quit

Planning by:

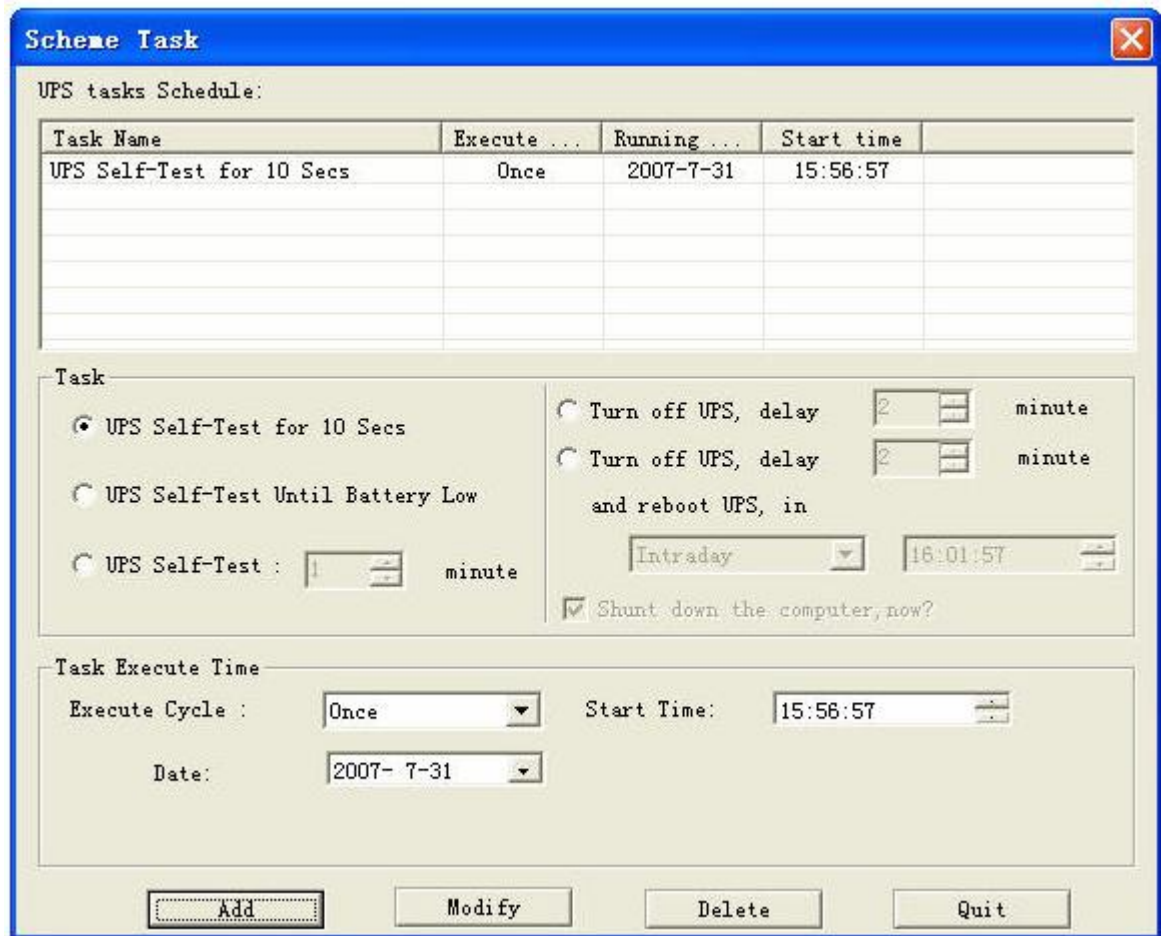
- 1) UPS self-diagnose 10 seconds
- 2) UPS stops self-diagnose until the battery voltage is low
- 3) UPS self-diagnose X minutes
- 4) shut down UPS in X minutes
- 5) Shut down UPS in X minutes and restart in Y minutes

Carrying out on regular basis as below:

- 1) once
- 2) Everyday
- 3) EveryWeek
- 4) Everymonth
- 5) Every Day

User can click “add” according to planning and carrying out on regular basis, it will be well added as below:

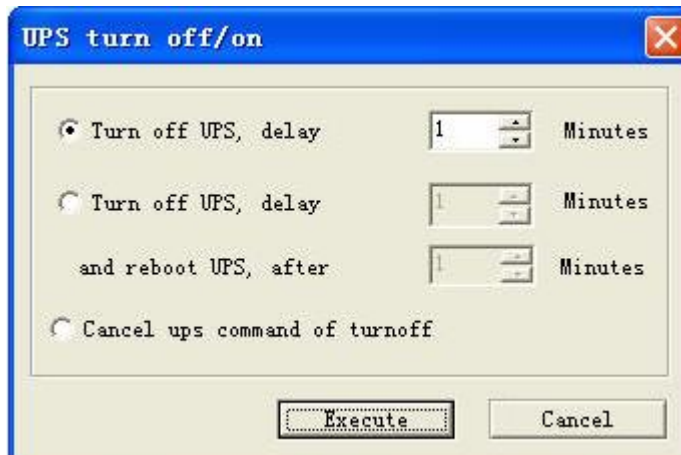




After it' s added, software will carry it out automatically when set time

Turn off and Turn on

Click "Turn off/Turn on" as below

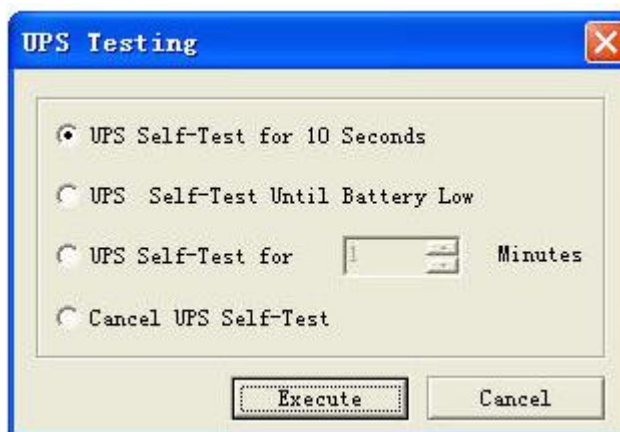


Provide 3 functions as follows

- 1) Shut down UPS in X minutes and click on “execute” UPS will automatically shut down in X minutes
- 2) Shut down UPS in X minutes and restart in Y minutes, click on “execute” , UPS will automatically shut down in X minutes and restart in Y minutes.
- 3) Cancel command of shut down UPS. When the command of shut down UPS was sent but UPS is still waiting for shutdown, we can cancel the command.

## Testing

Click “test” as below



Providing 4 functions:

- 1) UPS self-diagnose 10 seconds: click “execute” , testing is finished after UPS self-diagnose for 10 seconds
- 2) UPS self-diagnose till the battery voltage is low: click “execute” , testing is finished when UPS battery voltage is low
- 3) UPS self-diagnose X minutes: click “execute” , testing is finished in X minutes
- 4) Cancel UPS self-diagnosis: UPS cancels testing when execute cancel UPS self-diagnosis

## About PowerManager II

Click on the icon of PowerManager in the panel and further click on “about” in the pop-up menu then you can open “PowerManager” window

# PowerManager II for LINUX

## 1. Software installation and operation

### i) soft installation

copy the package ups\_manager to you favorite directory , example :/root/tmp

Use the tar command to extract files from the diskette or software package:

```
tar -xzvf ups_manager.tar.gz
```

Change the working directory to /tmp.

```
cd /root/tmp
```

Execute the installation program:

```
./install.linux.sh
```

The installation program will not execute in some shell scripts. If this happens, change to another shell script and try again.

the installation program will automatically copy files to the default location "/etc/RichComm/ups\_manager/" and modify the system startup file to contain the ups\_manager for UNIX daemon process.

### ii) start program

The installation program will automatically start the main program .

you can start it use following command:

```
./ups_manager start
```

### iii) stop program

you can start it use following command:

```
./ups_manager stop
```

### iv) config program

you can start it use following command:

```
./ups_manager config
```



## 2.software package

`./ups_monitor`  
`./ups_status`  
`./ups_config`  
`./shutdown.sh`  
`./ups_manager`  
`./ups_manager start`  
`./ups_manager stop`  
`./ups_manager config`  
`./ups_manager status`  
`./ups_manager restart`  
`./TimeCfg.conf`  
`./install.linux.sh`  
`./Readme`  
`./SendMSG.sh`  
`./startup.add`

# PowerManager II for SCO UNIX

## 1. Software installation and operation

### i) soft installation

copy the package ups\_manager to you favorite directory , example :/root/tmp

Use the tar command to extract files from the diskette or software package:

```
tar -xvf ups_manager.tar
```

Change the working directory to /tmp.

```
cd /root/tmp
```

Execute the installation program:

```
./install.sco.sh
```

The installation program will not execute in some shell scripts. If this happens, change to another shell script and try again.

the installation program will automatically copy files to the default location "/etc/RichComm/ups\_manager/" and modify the system startup file to contain the ups\_manager for UNIX daemon process.

### ii) start program

The installation program will automatically start the main program .

you can start it use following command:

```
./ups_manager start
```

### iii) stop program

you can start it use following command:

```
./ups_manager stop
```

### iv) config program

you can start it use following command:

```
./ups_manager config
```



## 2.software package

```
.  
./ups_monitor  
./ups_status  
./ups_config  
./shutdown.sh  
./ups_manager  
./ups_manager start  
./ups_manager stop  
./ups_manager config  
./ups_manager status  
./ups_manager restart  
./TimeCfg.conf  
./install.sco.sh  
./Readme  
./SendMSG.sh
```

# PowerManager II for FreeBSD

## 1. Software installation and operation

### i) soft installation

copy the package ups\_manager to you favorite directory , example :/root/tmp Use the tar command to extract files from the diskette or software package:

```
tar -xzvf upsmanager1.0v.bsd.tar
```

This demand will create a directory: upsmanagerinstall. Enter this directory, execute file: ./install.freebsd.sh . Converse the file installation.the installation program will automatically copy files to the default location "/etc/ups\_manager/" and modify the system startup file to contain the ups\_manager for freebsd daemon process.

### ii) start program

The installation program will automatically start the main program .

you can start it use following command:

```
./ups_manager start
```

### iii) stop program

you can start it use following command:

```
./ups_manager stop
```

### iv) config program

you can start it use following command:

```
./ups_manager config
```

## **2.software package**

./ups\_monitor  
./ups\_status  
./ups\_config  
./shutdown.sh  
./ups\_manager  
./ups\_manager start  
./ups\_manager stop  
./ups\_manager status  
./ups\_manager config  
./ups\_manager restart  
./TimeCfg.conf  
./install.freebsd.sh  
./Readme  
./SendMSG.sh  
./startup.add

## **3.contact us and technical support**

TEL: (86)20-82329896      (86)20-82329869

E-Mail: [services@richcomm.com.cn](mailto:services@richcomm.com.cn)

WebSite: <http://www.richcomm.com>